

- NOTES:
- HYDRANT TO BE AMERICAN FLOW CONTROL 5-1/4" TRAFFIC MODEL B-62-B, OPEN LEFT. HOSE: TWO (2) 2.5-INCH. STEAMER ONE (1) 4.5-INCH. BODY COLOR TO BE RED.
 - GATE VALVE TO BE AMERICAN FLOW CONTROL SERIES 500 OR MUELLER, NON-RISING STEM, OPEN LEFT.
 - RESTRAINED JOINTS TO BE MEGA-LUG OR EQUAL.
 - AWWA C 550 FUSION BONDED EPOXY COATING INTERIOR AND EXTERIOR, MIN 8 MIL DFT.
 - VALVE BOX TO BE TYLER PIPE, 6850 SERIES OR BINGHAM & TAYLOR, 15B SERIES, SCREW TYPE.

FIRE HYDRANT ASSEMBLY-VERTICAL CURB

NO SCALE

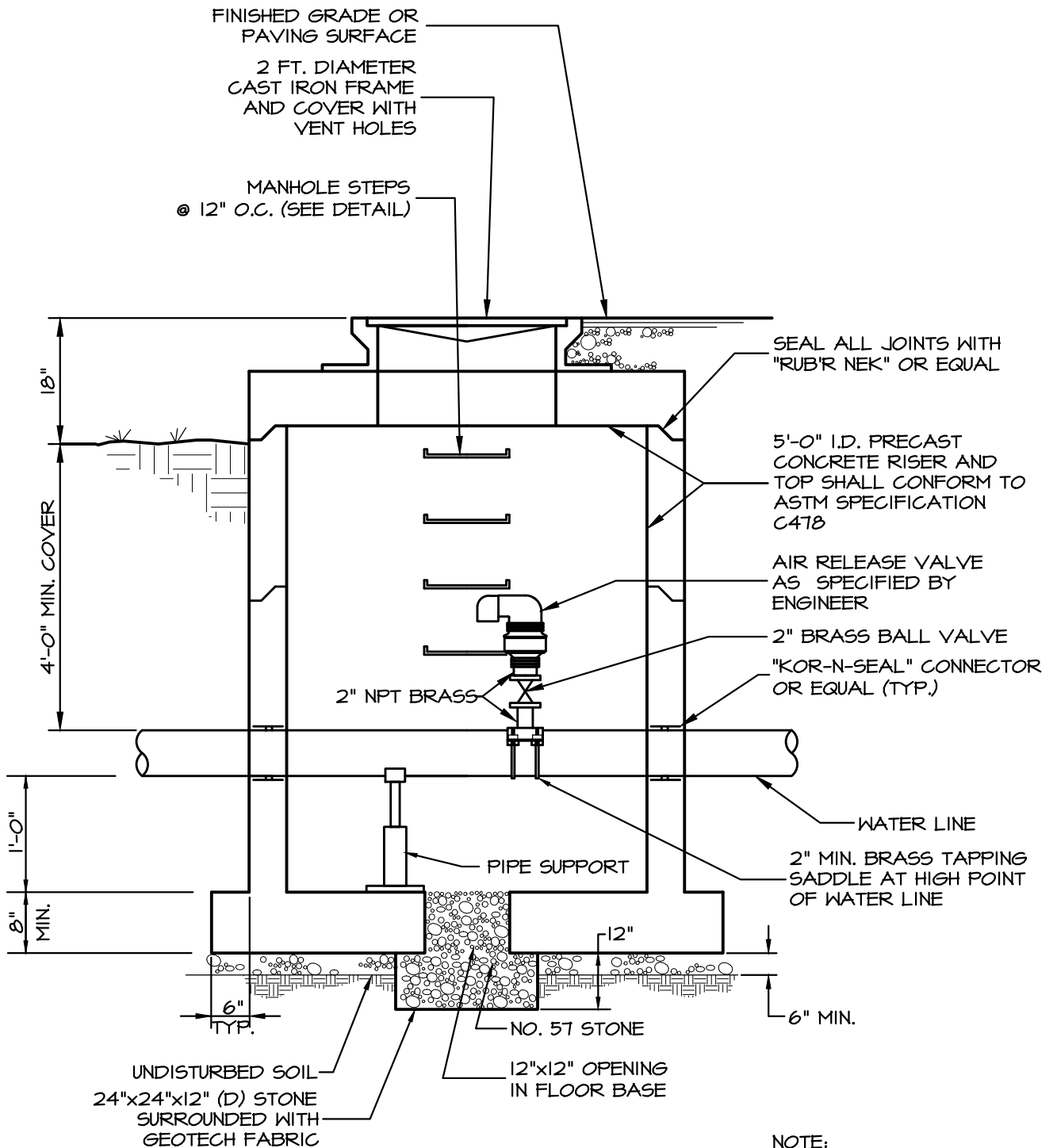


743 S. BROAD ST.
LITITZ, PA 17543
(717) 626-7271
elagroup.com

FIRE HYDRANT ASSEMBLY DETAIL STRASBURG BOROUGH AUTHORITY STANDARD DETAIL

SCALE:	NO SCALE
DRAWN BY:	TMO
DATE:	JANUARY 2022

DRAWING:
W-1



NOTE:
AIR RELEASE VALVE TO BE
CRISPIN MODEL PL10.

(2" AND LESS) AIR RELEASE VALVE MANHOLE

NO SCALE

AIR RELEASE VALVE AND MANHOLE DETAIL STRASBURG BOROUGH AUTHORITY STANDARD DETAIL

743 S. BROAD ST.
LITITZ, PA 17543
(717) 626-7271
elagroup.com

SCALE:	NO SCALE
DRAWN BY:	TMO
DATE:	JANUARY 2022

DRAWING:

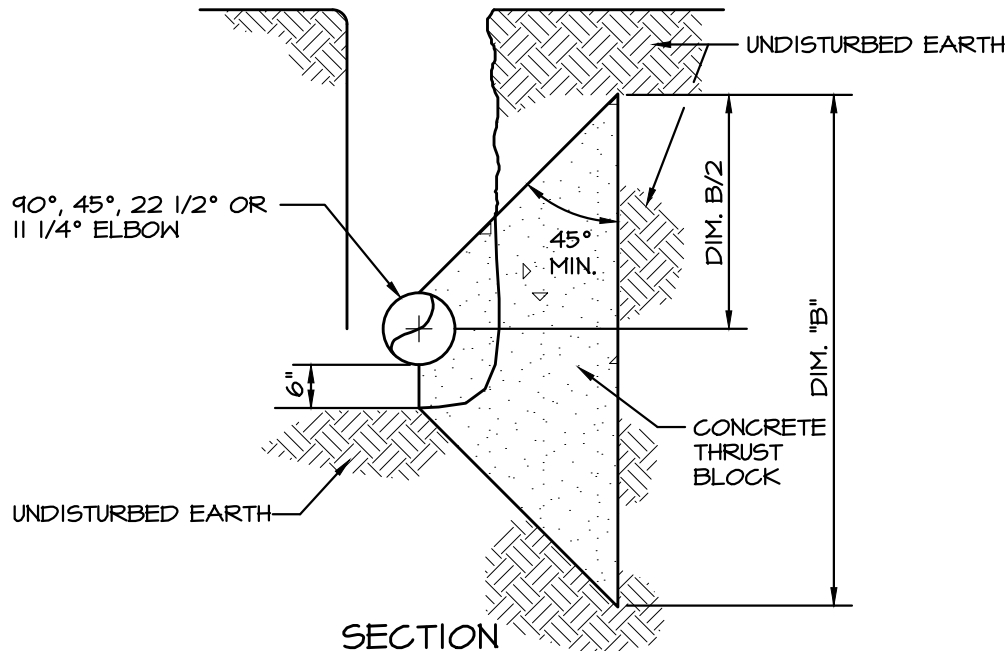
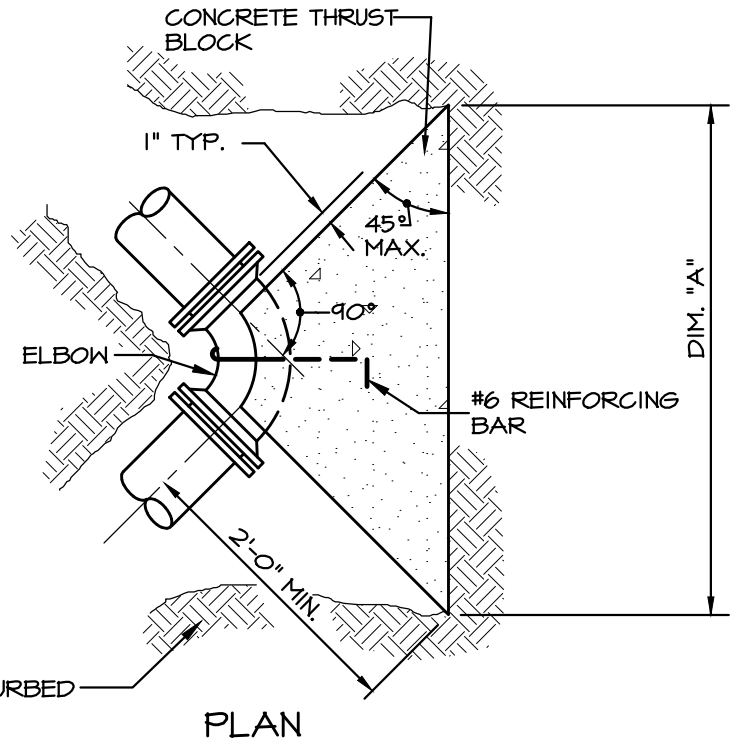
W-2

THRUST BLOCK DIMENSION
SCHEDULE - ELBOWS(*)
(DUCTILE IRON PIPE)

PIPE DIAM.	DIM.	ELBOW DEFLECTION ANGLE			
		11 1/4°	22 1/2°	45°	90°
4"	A	12"	18"	24"	24"
	B	12"	12"	12"	18"
6"	A	18"	24"	30"	42"
	B	12"	18"	24"	30"
8"	A	24"	24"	42"	60"
	B	12"	24"	30"	36"
12"	A	30"	42"	54"	90"
	B	24"	30"	36"	48"

(*) THRUST BLOCK DESIGN BASED ON THE MINIMUM SOIL HORIZONTAL BEARING STRENGTH OF 3000 PSF AND 150 PSI WORKING PRESSURE PLUS 50% WATER HAMMER ALLOWANCE.

FOR PIPE SIZES GREATER THAN 12", SUBMIT ENGINEERING CALCULATIONS TO VERIFY PROPOSED THRUST BLOCK SIZES.



HORIZONTAL AND VERTICAL UP RESTRAINT THRUST BLOCKING DETAIL - ELBOWS

NO SCALE



HORIZONTAL AND VERTICAL UP RESTRAINT THRUST BLOCKING DETAIL-ELBOWS STRASBURG BOROUGH AUTHORITY STANDARD DETAIL

743 S. BROAD ST.
LITITZ, PA 17543
(717) 626-7271
elagroup.com

SCALE: NO SCALE
DRAWN BY: TMO
DATE: JANUARY 2022

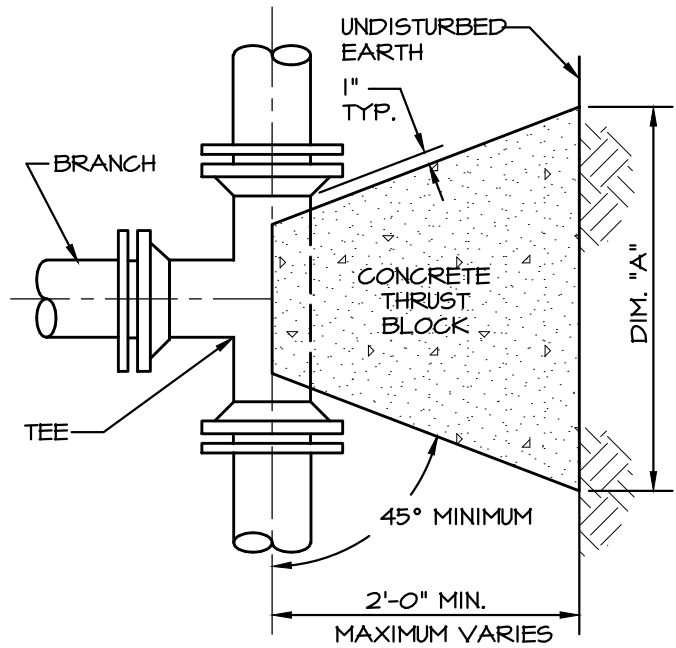
DRAWING:
W-3

THRUST BLOCK DIMENSION SCHEDULE - ELBOWS(*) (DUCTILE IRON PIPE)

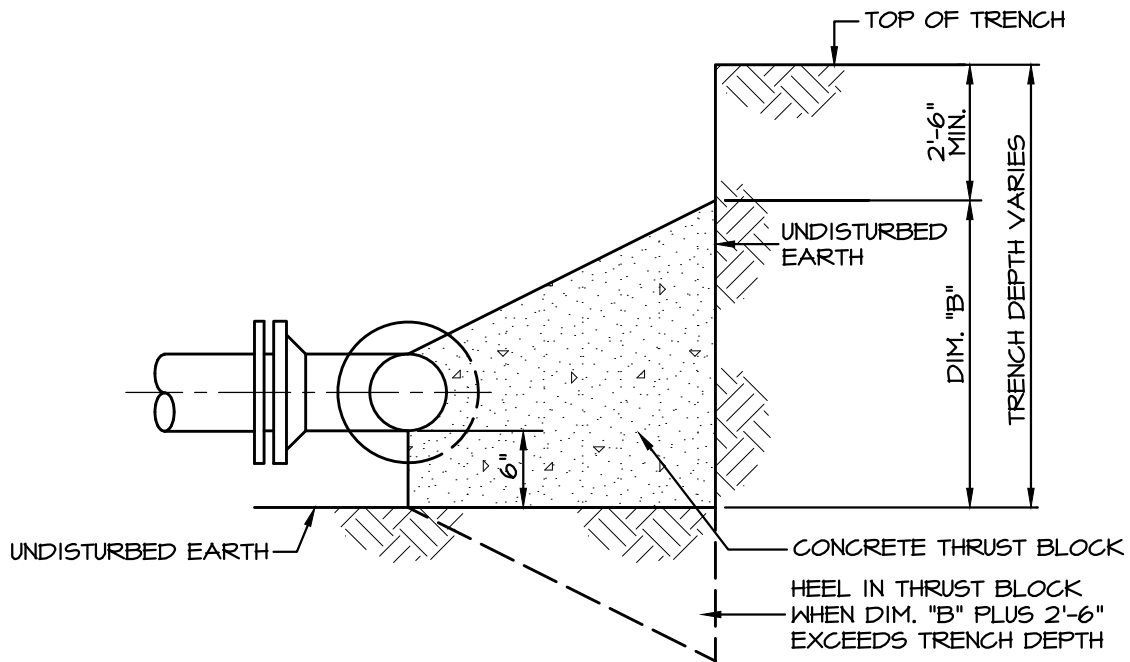
DIM.	BRANCH SIZE			
	4"	6"	8"	12"
A	36"	42"	60"	96"
B	18"	24"	30"	42"

(*) THRUST BLOCK DESIGN BASED ON THE MINIMUM SOIL HORIZONTAL BEARING STRENGTH OF 3000 PSF AND 150 PSI WORKING PRESSURE PLUS 50% WATER HAMMER ALLOWANCE.

FOR PIPE SIZES GREATER THAN 12", SUBMIT ENGINEERING CALCULATIONS TO VERIFY PROPOSED THRUST BLOCK SIZES.



PLAN



SECTION

HORIZONTAL RESTRAINT THRUST BLOCKING DETAIL - TEES

NO SCALE



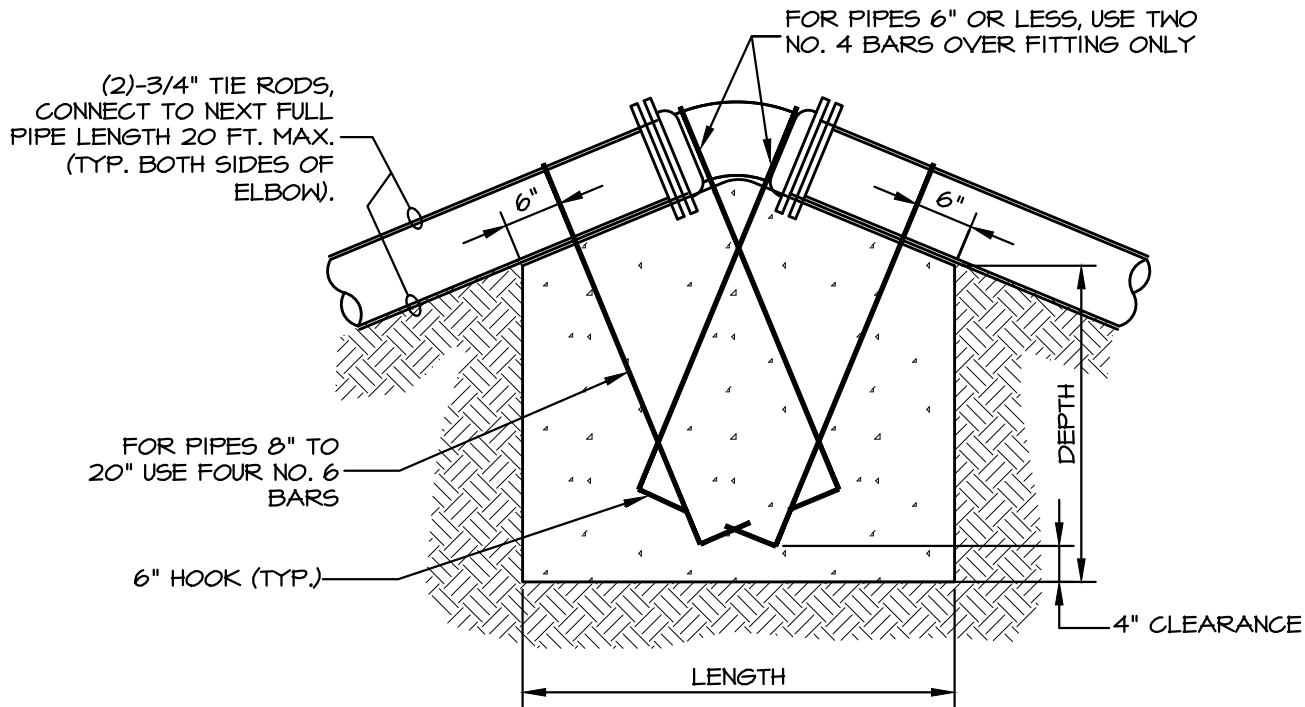
HORIZONTAL RESTRAINT THRUST BLOCKING DETAILS-TEES STRASBURG BOROUGH AUTHORITY STANDARD DETAIL

743 S. BROAD ST.
LITITZ, PA 17543
(717) 626-7271
elagroup.com

SCALE: NO SCALE
DRAWN BY: TMO
DATE: JANUARY 2022

DRAWING:
W-4

PIPE SIZES	DIMENSIONS OF CONCRETE BLOCKING								
	LENGTH			WIDTH			DEPTH		
	11 1/4°	22 1/2°	45°	11 1/4°	22 1/2°	45°	11 1/4°	22 1/2°	45°
4" AND SMALLER	2'	4'	4'	1.5'	3'	3'	1'	2'	3'
6" AND 8"	3'	4'	6'	3'	3'	3'	2'	3'	4'
10" AND 12"	4.5'	6'	8'	3'	3'	4'	3'	4.5'	5'
14" AND 16"	6'	8'	11'	3.5'	3.5'	5'	2.5'	5'	5'
18" AND 20"	7'	9'	13'	4'	5'	5.5'	4'	5'	6'



NOTES:

1. DIMENSIONS OF CONCRETE BLOCKS VERIFIED USING AWWA M41 DUCTILE IRON PIPE AND FITTINGS. ASSUMPTIONS USED FOR CALCULATIONS WERE A WORKING PRESSURE OF 200 PSI AND A SAFETY FACTOR OF 1.5.
2. IF THE OWNER AGREES, TIE RODS MAY BE ELIMINATED PROVIDED ALL JOINTS ARE MECHANICAL JOINT TYPE WITH JOINT RESTRAINT. (MEGALUG BY EBAA IRON SERIES 1100 OR APPROVED EQUAL).
3. NO COUPLING OR JOINTS SHALL BE COVERED WITH CONCRETE .
4. REINFORCING BAR STRAPS TO BE SHAPED TO PIPE CURVATURE.
5. ALL EXPOSED STEEL TO BE PAINTED WITH TWO COATS ASPHALTIC PAINT.
6. CONCRETE BEARING SURFACES SHALL BE UNDISTURBED SOIL.

TYPICAL THRUST BLOCKING FOR VERTICAL UPWARD THRUSTS

NO SCALE

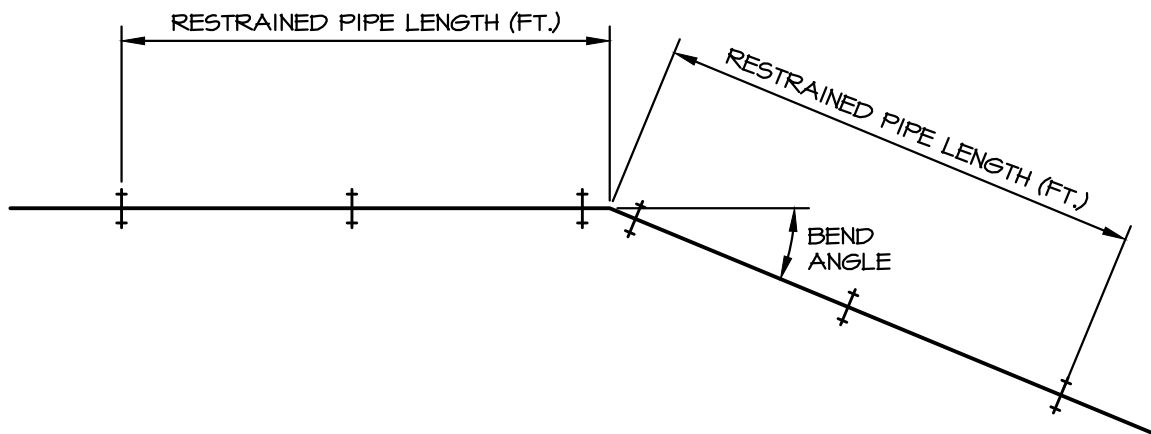


TYPICAL THRUST BLOCKING FOR VERTICAL UPWARD THRUSTS STRASBURG BOROUGH AUTHORITY STANDARD DETAIL

743 S. BROAD ST.
LITITZ, PA 17543
(717) 626-7271
elagroup.com

SCALE: NO SCALE
DRAWN BY: TMO
DATE: JANUARY 2022

DRAWING:
W-5



VERTICAL RESTRAINED PIPE LENGTH SCHEDULE (DUCTILE IRON PIPE)			
PIPE DIAMETER	VERTICAL ELBOW DEFLECTION ANGLE		
	45°	22 1/2°	11 1/4°
4"	20'	10'	5'
6"	27'	13'	7'
8"	36'	17'	9'
10"	42'	21'	10'
12"	49'	24'	12'
16"	62'	30'	15'

HORIZONTAL RESTRAINED PIPE LENGTH SCHEDULE (DUCTILE IRON PIPE)						
PIPE DIAMETER	HORIZONTAL ELBOW DEFLECTION ANGLE				TEE BRANCH	DEAD END
	90°	45°	22 1/2°	11 1/4°		
4"	21'	9'	5'	2'	47	47
6"	28'	12'	6'	3'	66	66
8"	37'	15'	8'	4'	85	85
10"	43'	18'	9'	5'	101	101
12"	50'	21'	10'	5'	118	118
16"	62'	26'	13'	7'	150	150

NOTES:

1. HORIZONTAL AND VERTICAL RESTRAINED PIPE LENGTH SCHEDULE CALCULATED USING EBBA IRON - RESTRAINT LENGTH CALCULATOR 6.3. ASSUMPTIONS USED FOR CALCULATIONS WERE GP SOIL TYPE, 2.0 TO 1.0 SAFETY FACTOR, TRENCH TYPE 5, 2 FEET OF BURY DEPTH AND TEST PRESSURE OF 150 PSI. CONTRACTOR SHALL BE RESPONSIBLE TO VERIFY ALL CALCULATION ASSUMPTIONS AND MAKE THE FINAL RESTRAINED LENGTH SELECTION.
2. FOR PIPE SIZES GREATER THAN 16", SUBMIT ENGINEERING CALCULATIONS TO VERIFY PROPOSED RESTRAINED PIPE LENGTHS.
3. ADD 12% TO LENGTH IF PIPE IS POLYETHYLENE ENCASED.
4. WHERE RESTRAINED LENGTHS FROM ADJACENT FITTINGS OVERLAP, SUBMIT CALCULATIONS FOR RESTRAINED LENGTHS.

RESTRAINED PIPE LENGTH SCHEDULE

NO SCALE

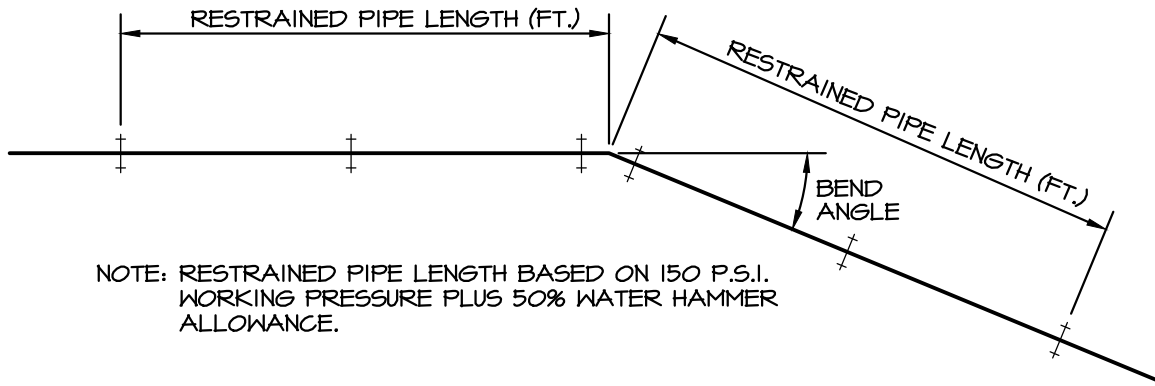


743 S. BROAD ST.
LITITZ, PA 17543
(717) 626-7271
elagroup.com

RESTRAINED PIPE LENGTH SCHEDULE STRASBURG BOROUGH AUTHORITY STANDARD DETAIL

SCALE:	NO SCALE
DRAWN BY:	TMO
DATE:	JANUARY 2022

DRAWING:
W-6



HORIZONTAL RESTRAINED PIPE LENGTH SCHEDULE (DUCTILE IRON PIPE)				
PIPE DIAMETER	HORIZONTAL ELBOW DEFLECTION ANGLE			
	90°	45°	22 1/2°	11 1/4°
3" THRU 4"	19'	8'	4'	2'
6"	27'	11'	7'	3'
8"	35'	14'	8'	4'
10"	42'	17'	8'	5'
12"	49'	20'	10'	5'

*ADD 12% TO LENGTH IF PIPE IS POLYETHYLENE ENCASED

VERTICAL RESTRAINED PIPE LENGTH SCHEDULE (DUCTILE IRON PIPE)			
PIPE DIAMETER	VERTICAL ELBOW DEFLECTION ANGLE		
	45°	22 1/2°	11 1/4°
3" THRU 4"	20'	10'	5'
6"	28'	14'	7'
8"	37'	18'	9'
10"	44'	21'	11'
12"	52'	25'	12'

*ADD 12% TO LENGTH IF PIPE IS POLYETHYLENE ENCASED

NOTE: FOR PIPE SIZES GREATER THAN 12", SUBMIT ENGINEERING CALCULATIONS TO VERIFY PROPOSED RESTRAINED PIPE LENGTHS.

DUCTILE IRON RESTRAINED PIPE LENGTH SCHEDULE

NO SCALE

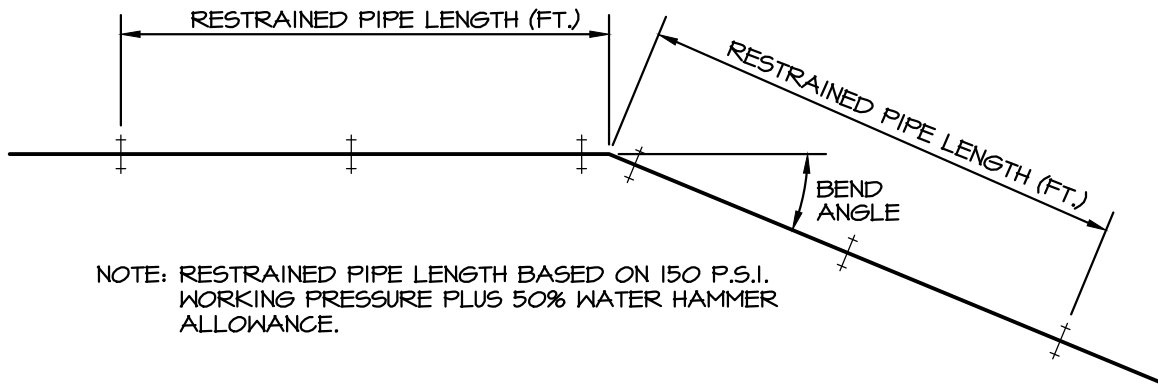


743 S. BROAD ST.
LITITZ, PA 17543
(717) 626-7271
elagroup.com

DUCTILE IRON RESTRAINED PIPE LENGTH SCHEDULE STRASBURG BOROUGH AUTHORITY STANDARD DETAIL

SCALE: NO SCALE
DRAWN BY: TMO
DATE: JANUARY 2022

DRAWING:
W-7



HORIZONTAL RESTRAINED PIPE LENGTH SCHEDULE (PVC PIPE)				
PIPE DIAMETER	HORIZONTAL ELBOW DEFLECTION ANGLE			
	90°	45°	22 1/2°	11 1/4°
1 1/2" THRU 4"	27'	11'	6'	3'
6"	38'	15'	10'	4'
8"	49'	20'	11'	6'
10"	59'	24'	12'	7'
12"	69'	28'	14'	8'

VERTICAL RESTRAINED PIPE LENGTH SCHEDULE (PVC PIPE)			
PIPE DIAMETER	VERTICAL ELBOW DEFLECTION ANGLE		
	45°	22 1/2°	11 1/4°
1 1/2" THRU 4"	28'	14'	7'
6"	39'	20'	10'
8"	52'	25'	13'
10"	62'	29'	15'
12"	73'	35'	17'

NOTE: FOR PIPE SIZES GREATER THAN 12", SUBMIT ENGINEERING CALCULATIONS TO VERIFY PROPOSED RESTRAINED PIPE LENGTHS.

PVC RESTRAINED PIPE LENGTH SCHEDULE

NO SCALE

PVC RESTRAINED PIPE LENGTH SCHEDULE STRASBURG BOROUGH AUTHORITY STANDARD DETAIL

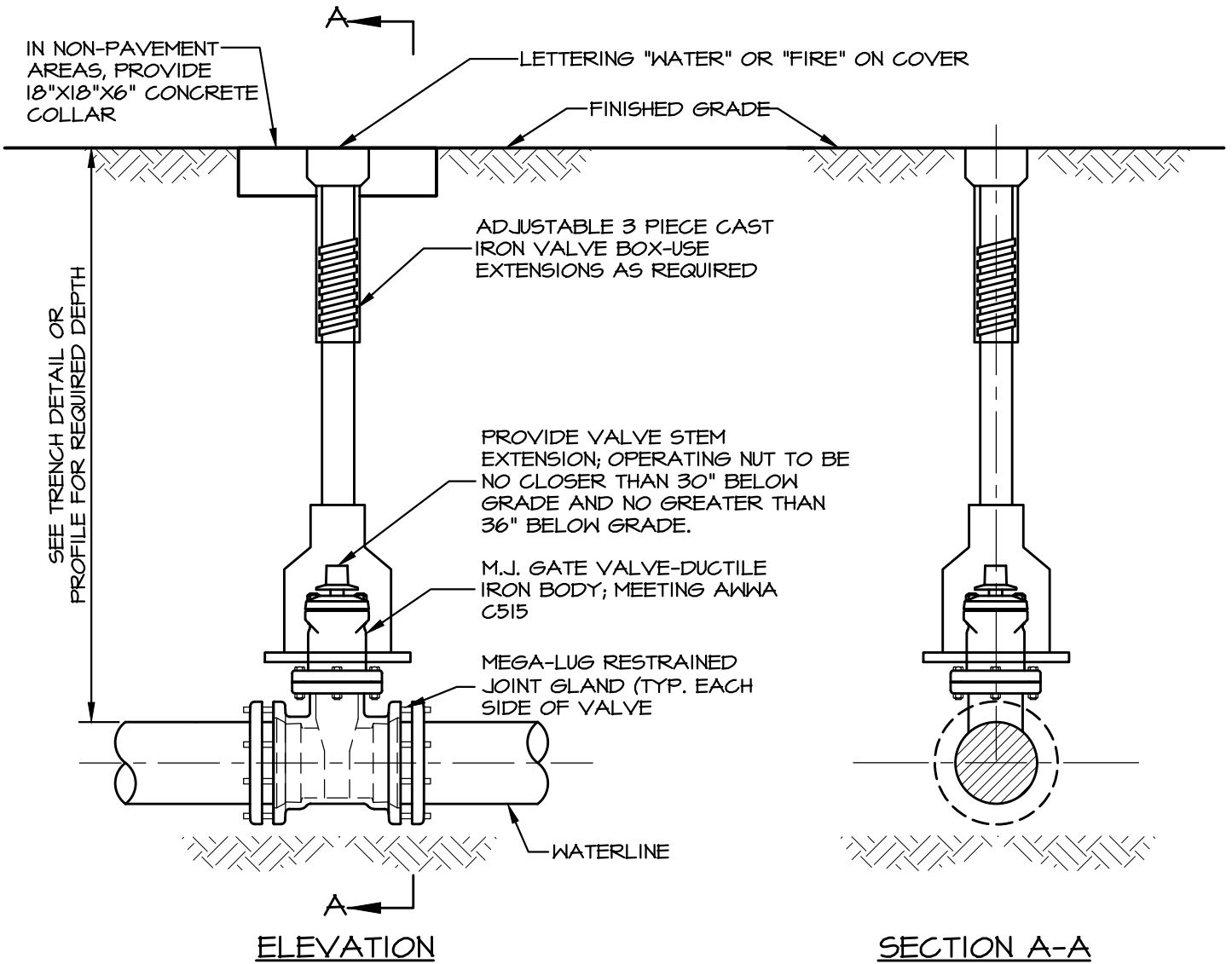


743 S. BROAD ST.
LITITZ, PA 17543
(717) 626-7271
elagroup.com

SCALE: NO SCALE
DRAWN BY: TMO
DATE: JANUARY 2022

DRAWING:
W-8

DRAWING: C:\Users\mberholzer\OneDrive\Documents\ELA Group\452-02T Water Specs and Detail Updates\Project Files\CAD Data\Utility\DETAILS.dwg - PLOTTED: Mar 25, 2022 11:55 am



NOTES:

1. IF EXTENSIONS ARE NECESSARY CONTRACTOR SHALL SET "PLUMB" AND ALIGN PROPERLY FOR ACCESS TO OPERATING NUT.
2. VALVES SHALL BE OPEN LEFT AND RIGHT CLOSE UNLESS OTHERWISE SPECIFIED.
3. GATE VALVES SHALL BE USED ON WATERLINES 12 INCHES AND SMALLER.
4. GATE VALVE TO BE AMERICAN FLOW CONTROL SERIES 500 OR MUELLER, NON-RISING STEM, OPEN LEFT.
5. RESTRAINED JOINTS TO BE MEGA-LUG OR EQUAL.
6. AWWA C 550 FUSION BONDED EPOXY COATING INTERIOR AND EXTERIOR, MIN 8 MIL DFT.
7. VALVE BOX TO BE TYLER PIPE, 6850 SERIES OR BINGHAM & TAYLOR, 15B SERIES, SCREW TYPE.

GATE VALVE AND VALVE BOX

NO SCALE

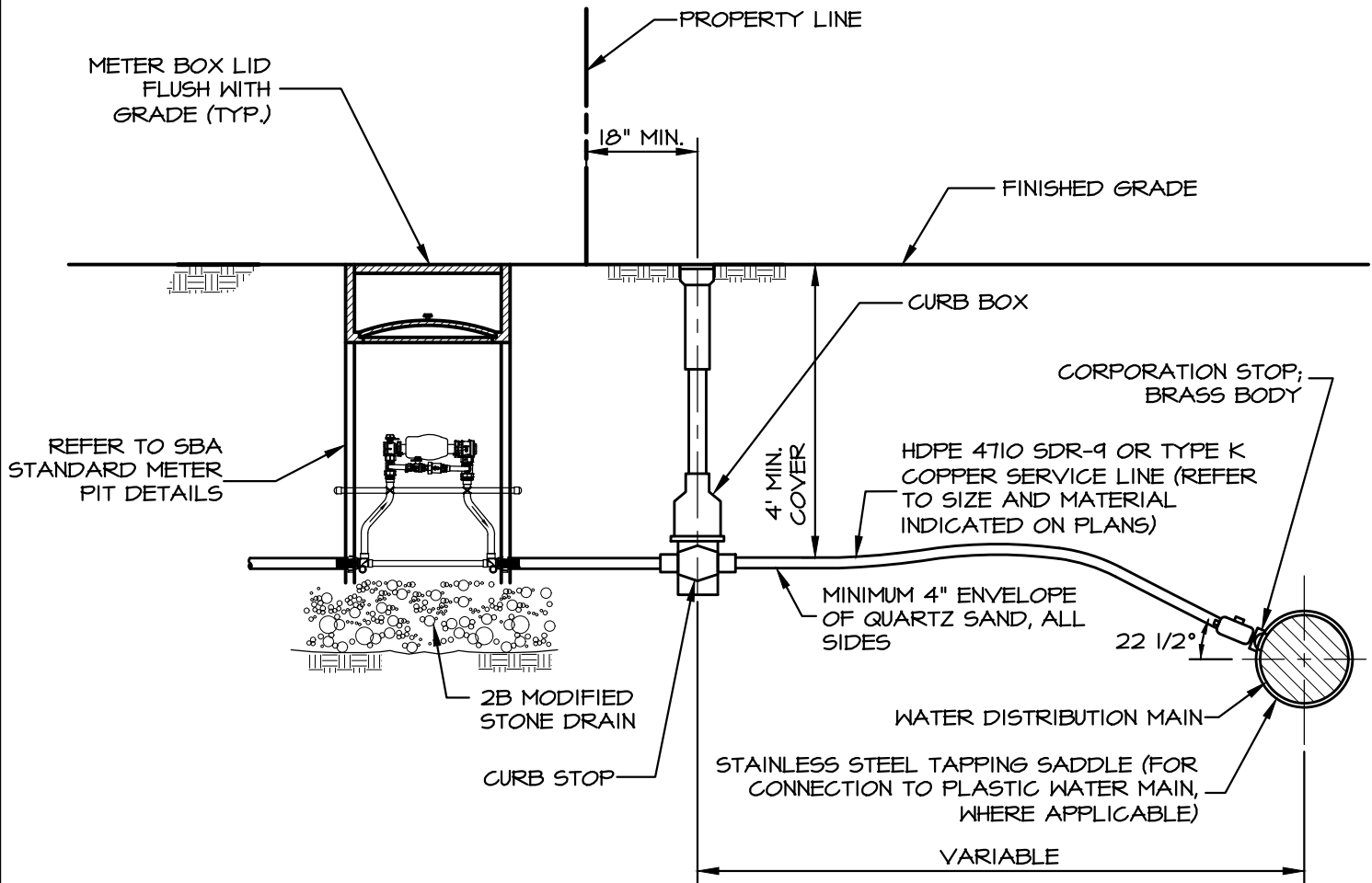


743 S. BROAD ST.
LITITZ, PA 17543
(717) 626-7271
elagroup.com

GATE VALVE AND VALVE BOX STRASBURG BOROUGH AUTHORITY STANDARD DETAIL

SCALE:	NO SCALE	DRAWING:
DRAWN BY:	TMO	W-9
DATE:	JANUARY 2022	

DRAWING: C:\Users\lmoberholzer\OneDrive\ELA Group\452-02T Water Specs and Detail Updates\Project Files\CAD Data\UtilityDETAILS.dwg - PLOTTED: Mar 25, 2022 11:55 am



NOTES:

1. WHEN USING POLYETHYLENE SERVICE TUBING, STAINLESS STEEL INSERTS SHALL BE USED.
2. ALL MATERIALS SHALL CONFORM TO NSF 61/ANSI 61; ANNEX F; ANNEX G; AND NSF/ANSI 372.
3. CURB BOX LID SHALL BE FLUSH WITH GRADE AND CURB BOX SHALL BE CENTERED OVER CURB STOP VALVE.
4. SERVICE LINE TO BE HDPE SDR-9 (CRESLINE CE BLUE, JM EAGLE, OR EJ PRESCOTT) OR TYPE K COPPER TUBING.
5. CURB STOP TO BE FORD METER BOX CO. B44-333, B44-444, OR B11-771, OR MUELLER COMPANY B25209.
6. CURB BOX TO BE BINGHAM & TAYLOR, SERIES 12B9 OR SERIES 14B, OR TYLER SERIES 6500.
7. CORPORATION STOP TO BE FORD METER BOX CO, MODEL F 1000 OR MUELLER COMPANY, H1500B.
8. TAPPING SADDLE SHALL BE USED FOR ALL 2" TAPS INTO DUCTILE OR CAST IRON.

WATER SERVICE CONNECTION WITH METER (3/4", 1", 1 1/2" AND 2")

NO SCALE



WATER SERVICE CONNECTION WITH METER (3/4", 1", 1 1/2" AND 2") STRASBURG BOROUGH AUTHORITY STANDARD DETAIL

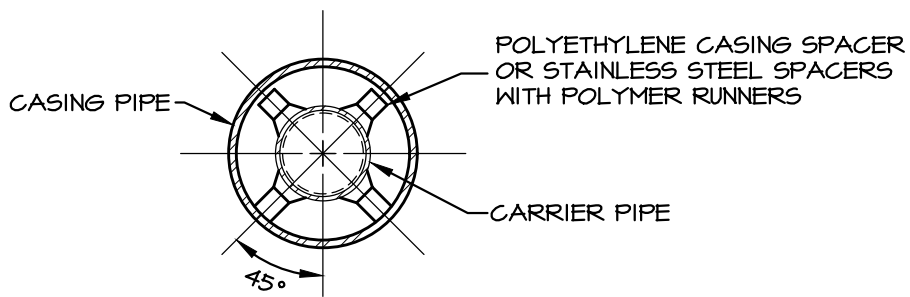
743 S. BROAD ST.
LITITZ, PA 17543
(717) 626-7271
elagroup.com

SCALE:	NO SCALE
DRAWN BY:	TMO
DATE:	JANUARY 2022

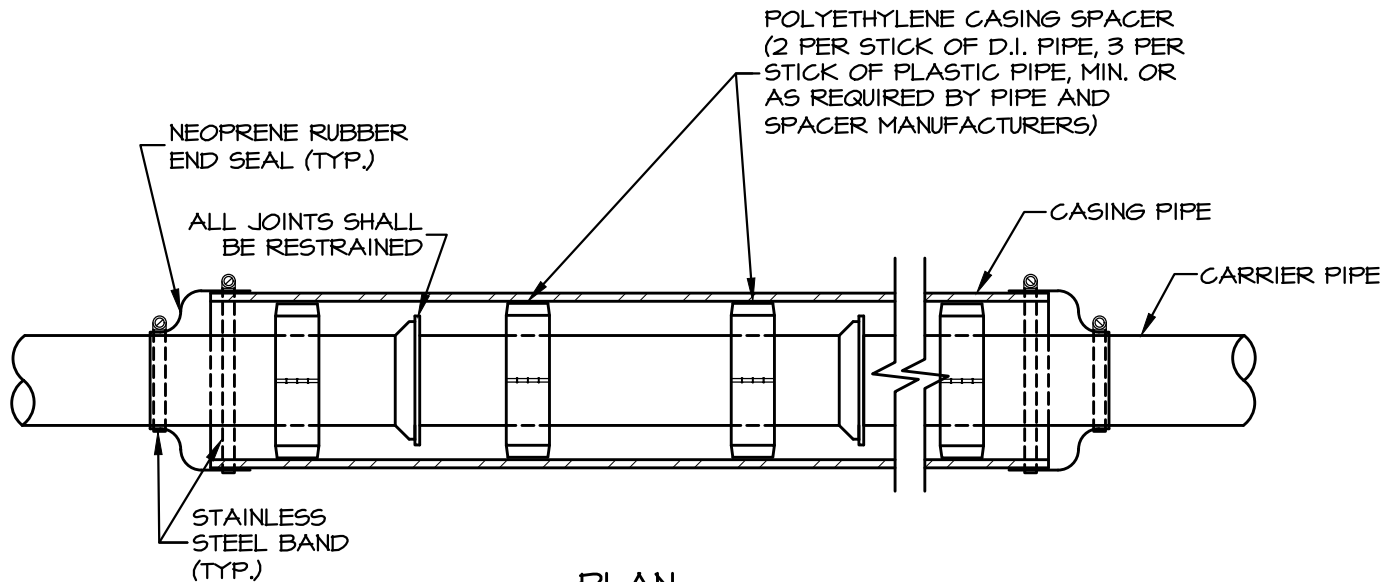
DRAWING:

W-10

DRAWING: C:\Users\mberholzer\OneDrive\Documents\ELA Group\452-02T Water Specs and Detail Updates\Project Files\CAD Data\Utility\DETAILS.dwg - PLOTTED: Mar 25, 2022 11:55 am



SECTION



PLAN

CASING CRADLE

NO SCALE

CASING CRADLE

STRASBURG BOROUGH AUTHORITY STANDARD DETAIL



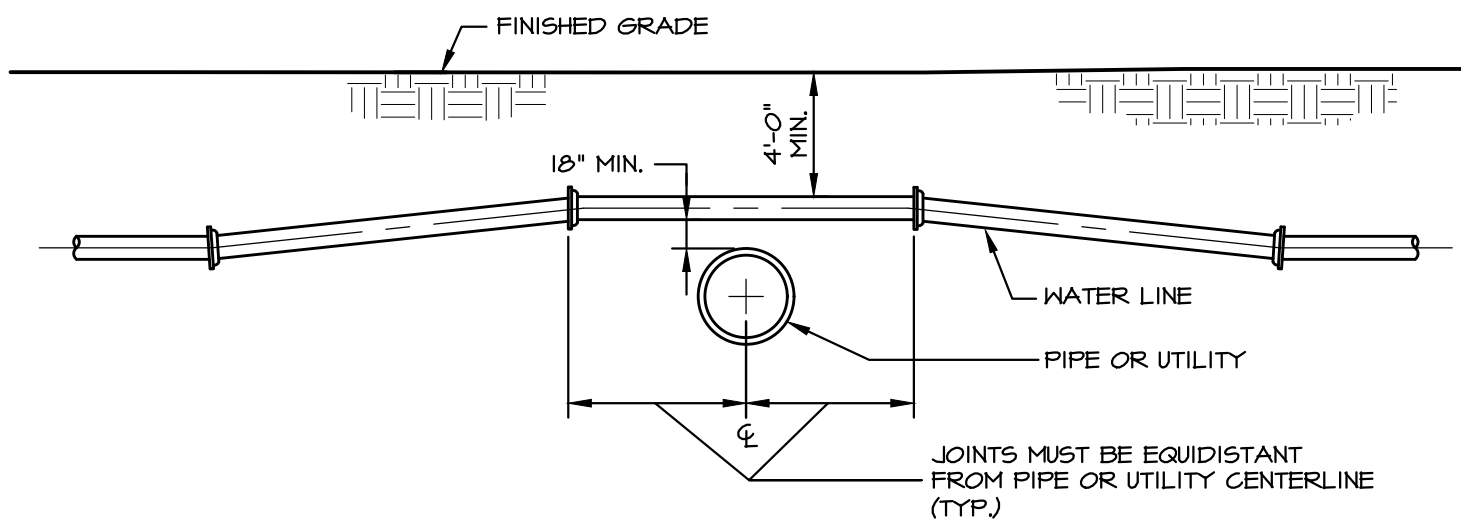
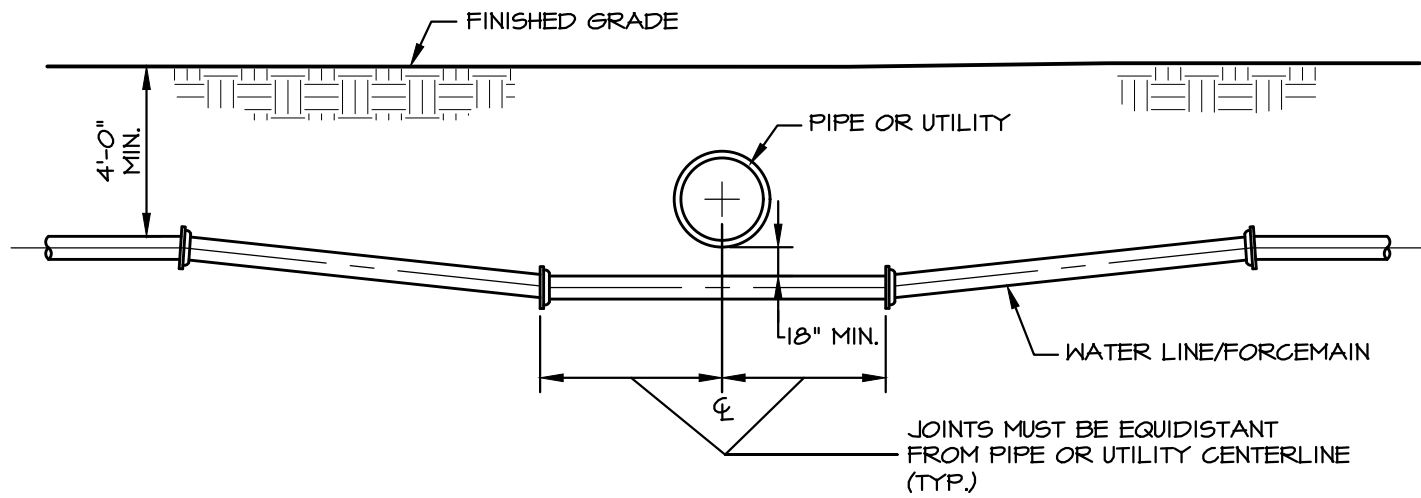
743 S. BROAD ST.
LITITZ, PA 17543
(717) 626-7271
elagroup.com

SCALE:	NO SCALE
DRAWN BY:	TMO
DATE:	JANUARY 2022

DRAWING:

W-11

DRAWING: C:\Users\lmoberholzer\ACCDocs\ELA_Group\452-02T Water Specs and Detail Updates\Project Files\CAD Data\UtilityDETAILS.dwg - PLOTTED: Mar 25, 2022 11:55 am



NOTES:

1. CONTRACTORS MUST INSTALL PIPE OR UTILITY CROSSINGS USING DEFLECTING JOINTS IN A MANNER THAT DOES NOT CREATE LOCALIZED SAGS OR HIGH POINTS THAT WOULD CAUSE THE ACCUMULATION OF AIR AND REQUIRE ADDITIONAL AIR RELEASE VALVES.
2. PIPE JOINT DEFLECTIONS TO BE IN ACCORDANCE WITH AWWA STANDARDS, SECTION C600.
3. ONLY FULL STICKS OF PIPE SHALL BE UTILIZED FOR THIS METHOD OF CROSSING PIPES OR UTILITIES.
4. THE UTILITY OWNER MAY, AT THEIR DISCRETION AND IN CONSULTATION WITH THE AUTHORITY, REQUIRE CONCRETE ENCASEMENT OF EITHER THE UTILITY OR WATER LINE/FORCEMAIN.

WATER LINE CROSSING PIPE OR UTILITY USING DEFLECTING JOINTS

NO SCALE



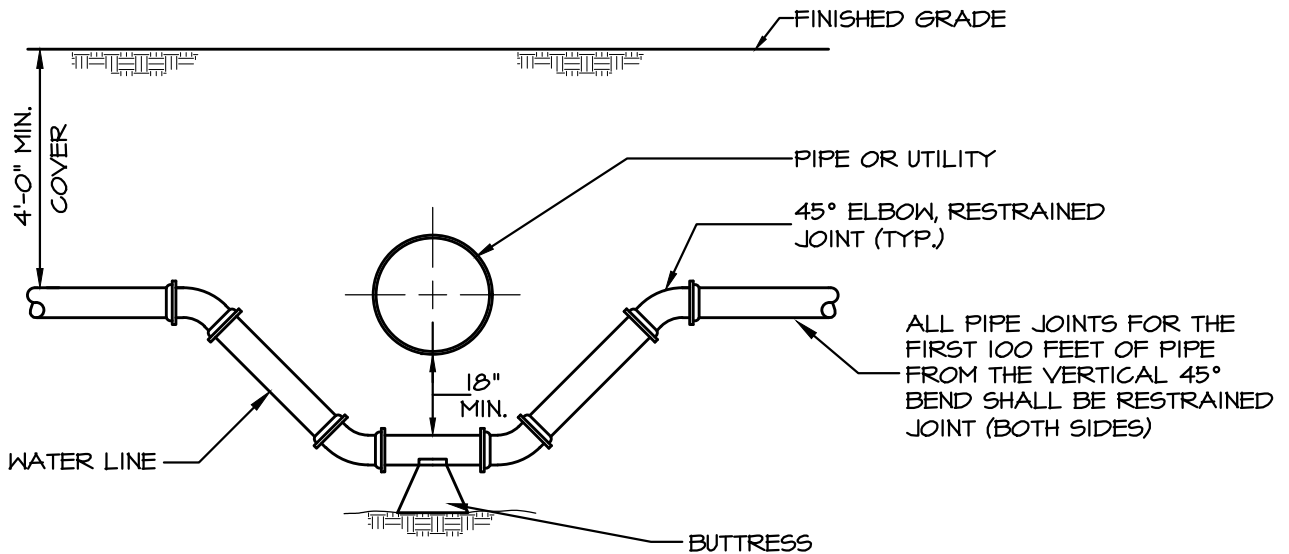
WATER LINE CROSSING PIPE OR UTILITY USING DEFLECTING JOINTS STRASBURG BOROUGH AUTHORITY STANDARD DETAIL

743 S. BROAD ST.
LITITZ, PA 17543
(717) 626-7271
elagroup.com

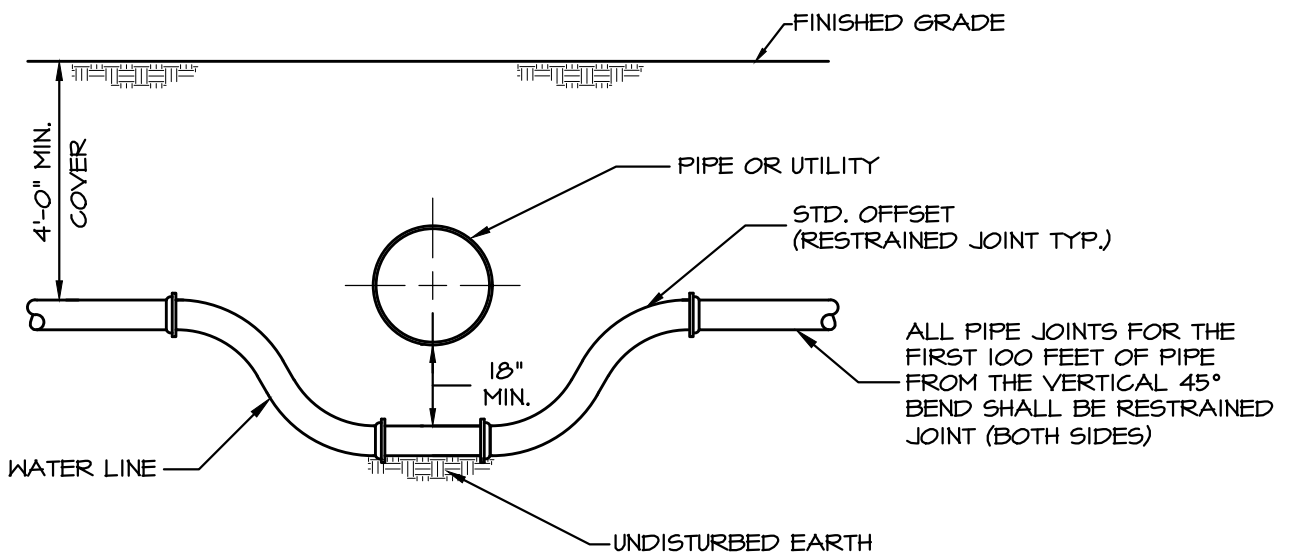
SCALE:	NO SCALE
DRAWN BY:	TMO
DATE:	JANUARY 2022

DRAWING:

W-12



USING ELBOWS



USING STD. OFFSETS

*NOTE: THIS DETAIL APPLIES TO CROSSINGS OF ALL EXISTING PIPES

WATER LINE CROSSING PIPE OR UTILITY USING FITTINGS WITH BUTTRESS

NO SCALE

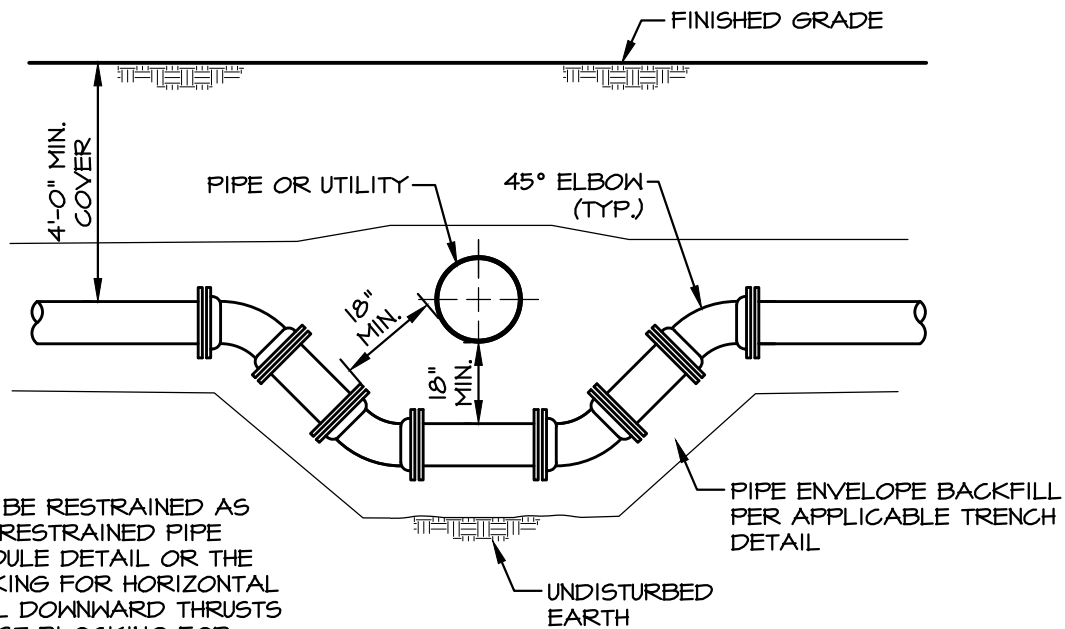


WATER LINE CROSSING PIPE OR UTILITY USING FITTINGS WITH BUTTRESS STRASBURG BOROUGH AUTHORITY STANDARD DETAIL

743 S. BROAD ST.
LITITZ, PA 17543
(717) 626-7271
elagroup.com

SCALE:	NO SCALE
DRAWN BY:	TMO
DATE:	JANUARY 2022

DRAWING:
W-13

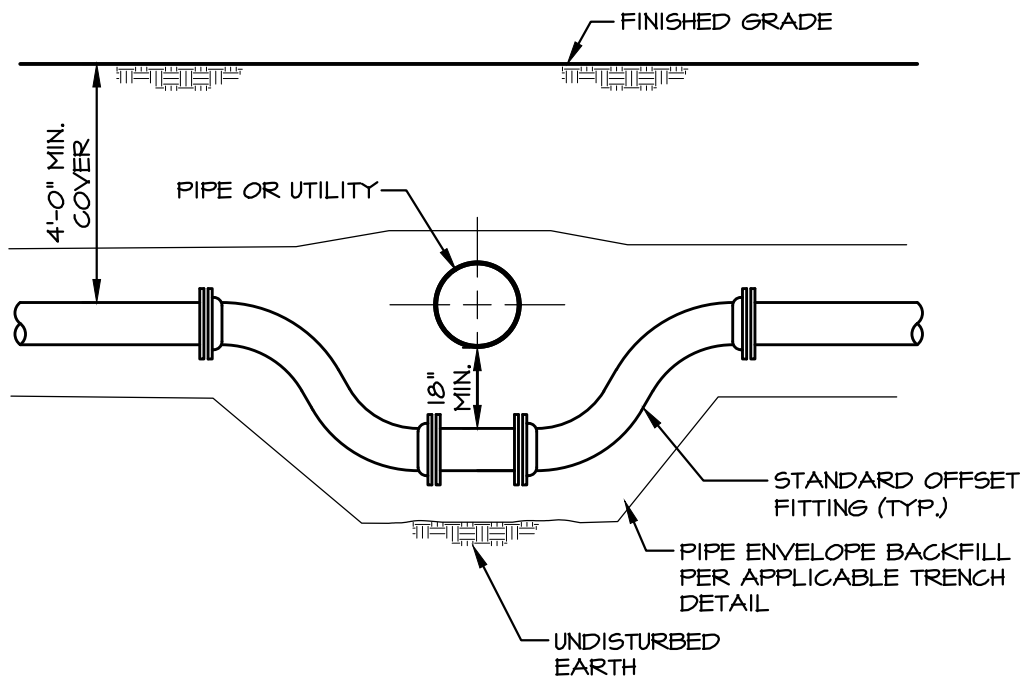


NOTES:

1. BENDS SHALL BE RESTRAINED AS SHOW ON THE RESTRAINED PIPE LENGTH SCHEDULE DETAIL OR THE THRUST BLOCKING FOR HORIZONTAL AND VERTICAL DOWNWARD THRUSTS AND THE THRUST BLOCKING FOR VERTICAL UPWARD THRUSTS DETAILS.

USING ELBOWS

2. REGARDLESS OF THE THRUST
RESTRAINT USED, THE FOUR BENDS OR
TWO OFFSETS SHOWN ON THIS DETAIL
SHALL BE RESTRAINED JOINT.



USING STANDARD OFFSETS

WATER LINE CROSSING PIPE OR UTILITY USING FITTINGS

NO SCALE



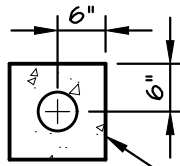
WATER LINE CROSSING PIPE OR UTILITY USING FITTINGS

STRASBURG BOROUGH AUTHORITY STANDARD DETAIL

743 S. BROAD ST.
LITITZ, PA 17543
(717) 626-7271
elagroup.com

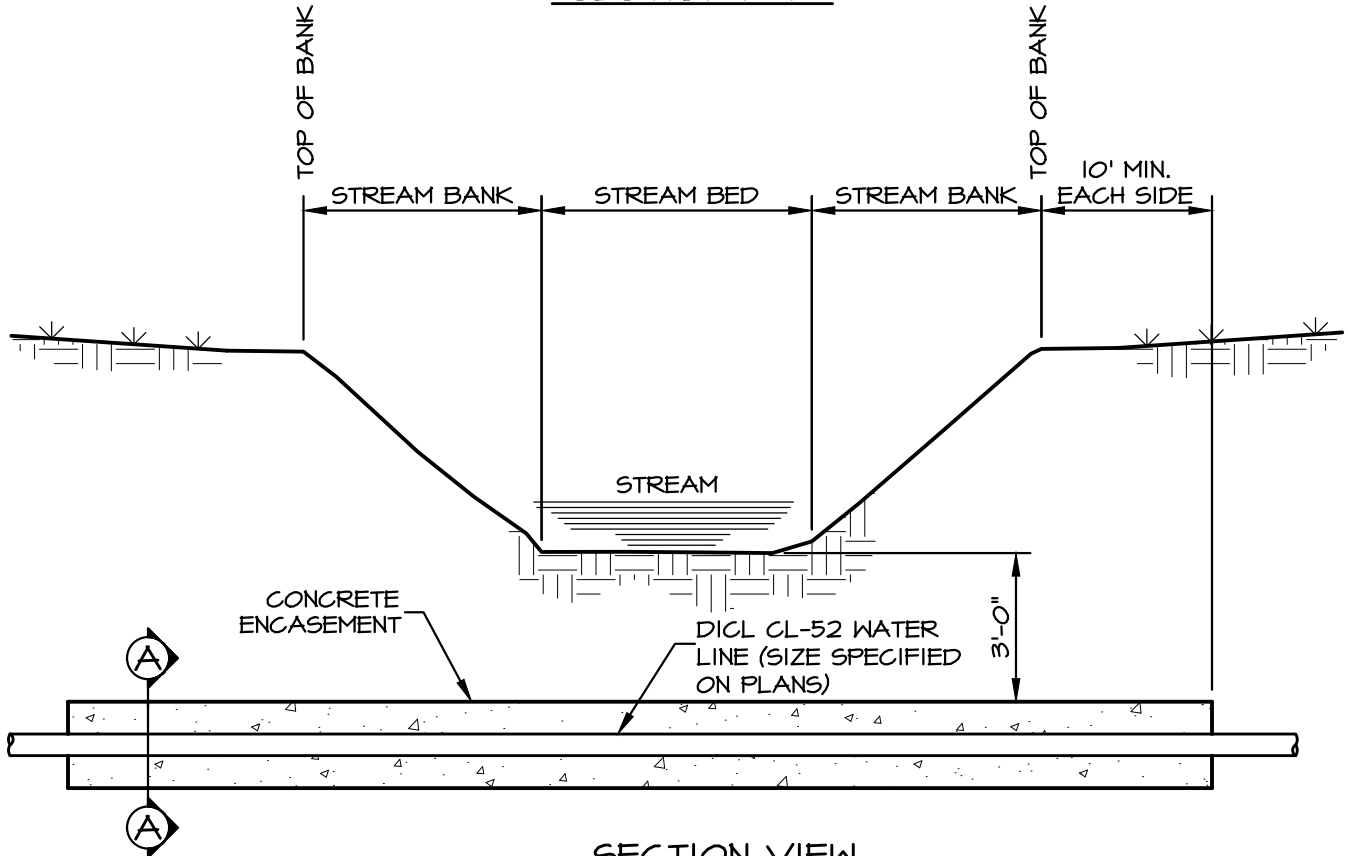
SCALE:	NO SCALE
DRAWN BY:	TMO
DATE:	JANUARY 2022

DRAWING:
W-14



3,000 PSI CONCRETE
ENCASEMENT

SECTION A-A



SECTION VIEW

NOTES:

1. ALL NECESSARY CHAPTER 102 AND 105 PERMITS SHALL BE ACQUIRED PRIOR TO INSTALLATION. CONTRACTOR SHALL IMPLEMENT ALL BEST MANAGEMENT PRACTICES AS SET FORTH WITHIN SAID PERMITS.
2. CONTRACTOR SHALL CONDUCT AN ONSITE MEETING WITH THE WATER AUTHORITY PRIOR TO ORDERING MATERIALS FOR THE STREAM CROSSING.
3. ANY CHANGES TO THE DESIGN OR LAYOUT OF THE STREAM CROSSING SHALL BE APPROVED BY THE WATER AUTHORITY PRIOR TO INSTALLATION.
4. ALL HORIZONTAL AND VERTICAL BENDS SHALL HAVE ADEQUATE CONCRETE THRUST BLOCKING OR RODDED PIPE RESTRAINT.

STREAM CROSSING DETAIL

NO SCALE



743 S. BROAD ST.
LITITZ, PA 17543
(717) 626-7271
elagroup.com

STREAM CROSSING DETAIL STRASBURG BOROUGH AUTHORITY STANDARD DETAIL

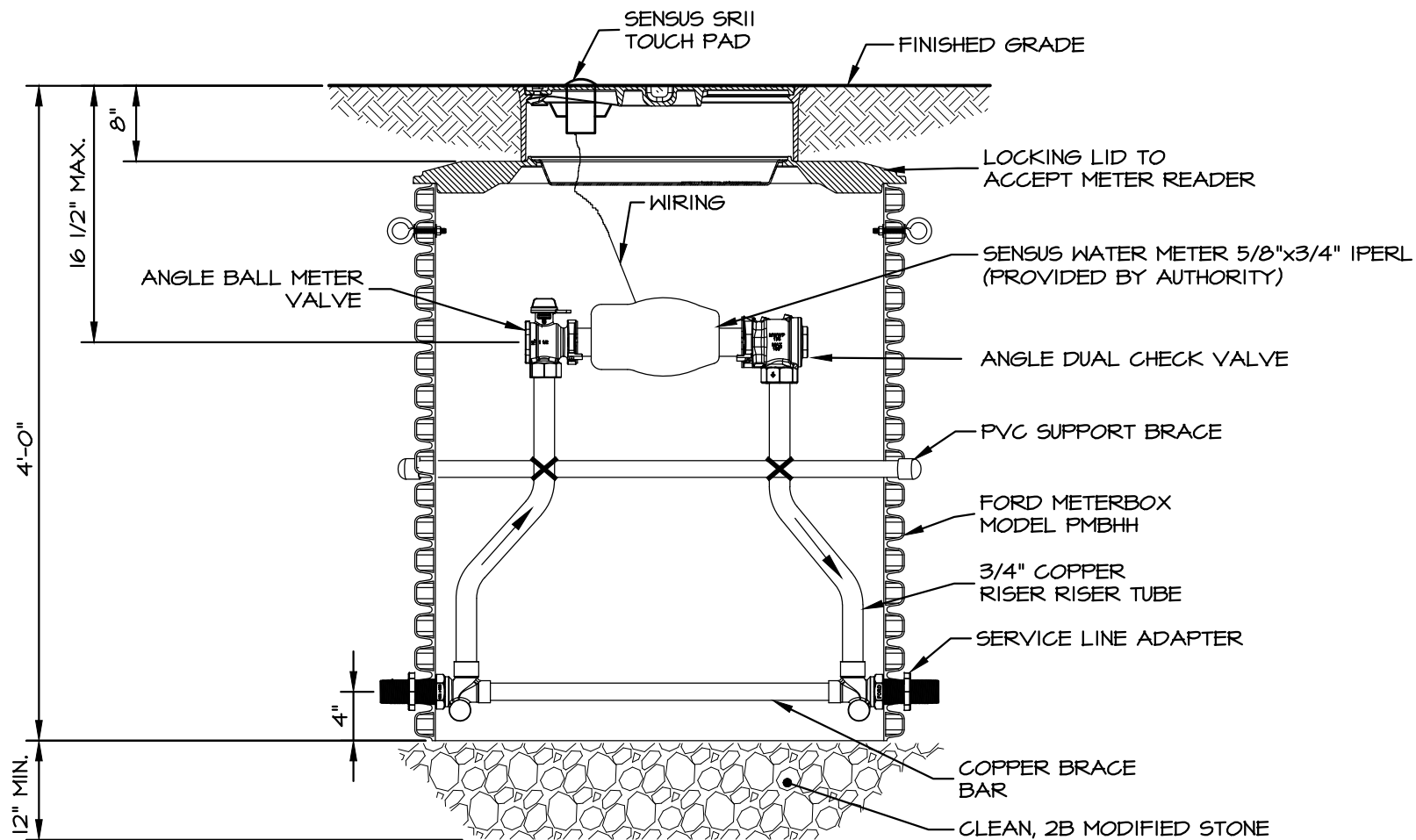
SCALE:	NO SCALE
DRAWN BY:	TMO
DATE:	JANUARY 2022

DRAWING:

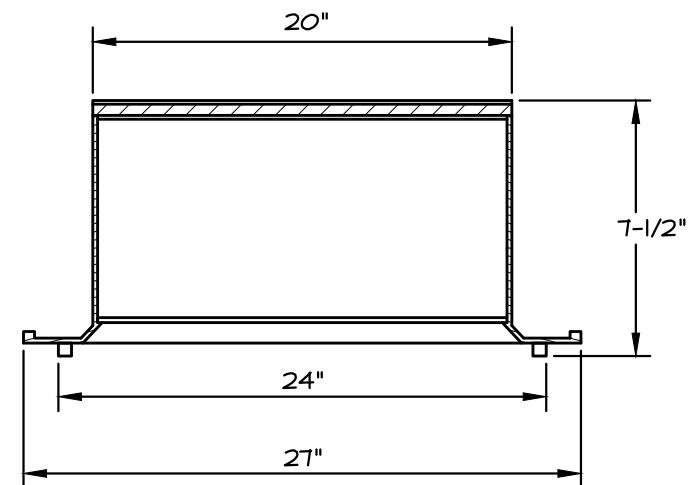
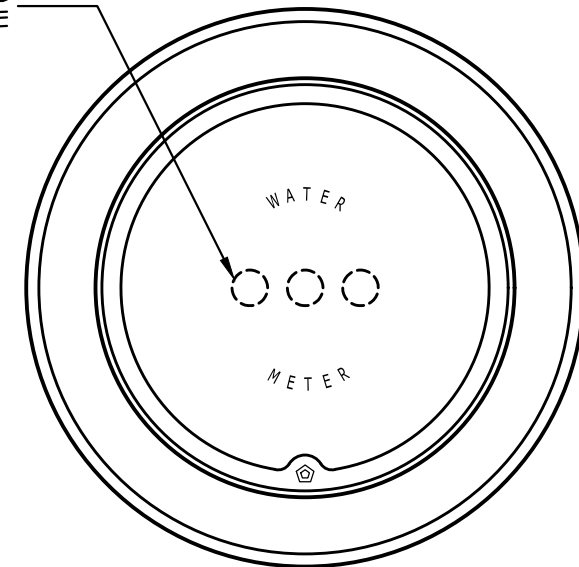
W-15

DRAWING:
W-16

DRAWING: C:\Users\lmoberholzer\ACCDocs\ELA_Group\452-021 Water Specs and Detail Updates\Project Files\CAD Data\Utility\DETAILS.dwg - PLOTTED: Mar 25, 2022 11:55 am



2" HOLES FOR ELECTRONIC
METER READING MODULE



GENERAL NOTES:

1. CONTACT THE STRASBURG BOROUGH AUTHORITY FOR INSPECTIONS: 717-687-7132.
2. ALL CONSTRUCTION OF THE WATER DISTRIBUTION SYSTEM SHALL CONFORM TO THE STRASBURG BOROUGH AUTHORITY WATER/SEWER SPECIFICATIONS, LATEST VERSION.
3. THE METER PIT SERVICE LINE BURY DEPTH SHALL BE AT A MINIMUM OF 4'-0".
4. BOTTOM OF METER PIT SHALL BE OPEN TO STONE BEDDING OR SHALL HAVE DRAINAGE HOLES AT BOTTOM OF METER PIT TO ALLOW FOR DRAINAGE OF METER PIT.

FRAME & LID NOTES:

1. FRAME AND LID SHALL BE CAST IRON AS PER ASTM A48-92, CLASS 25.
2. RECESSED INNER LID SHALL BE HIGH-IMPACT POLYSTYRENE PLASTIC.

WATER METER PIT WITH FRAME AND LID-3/4" SERVICE

NO SCALE

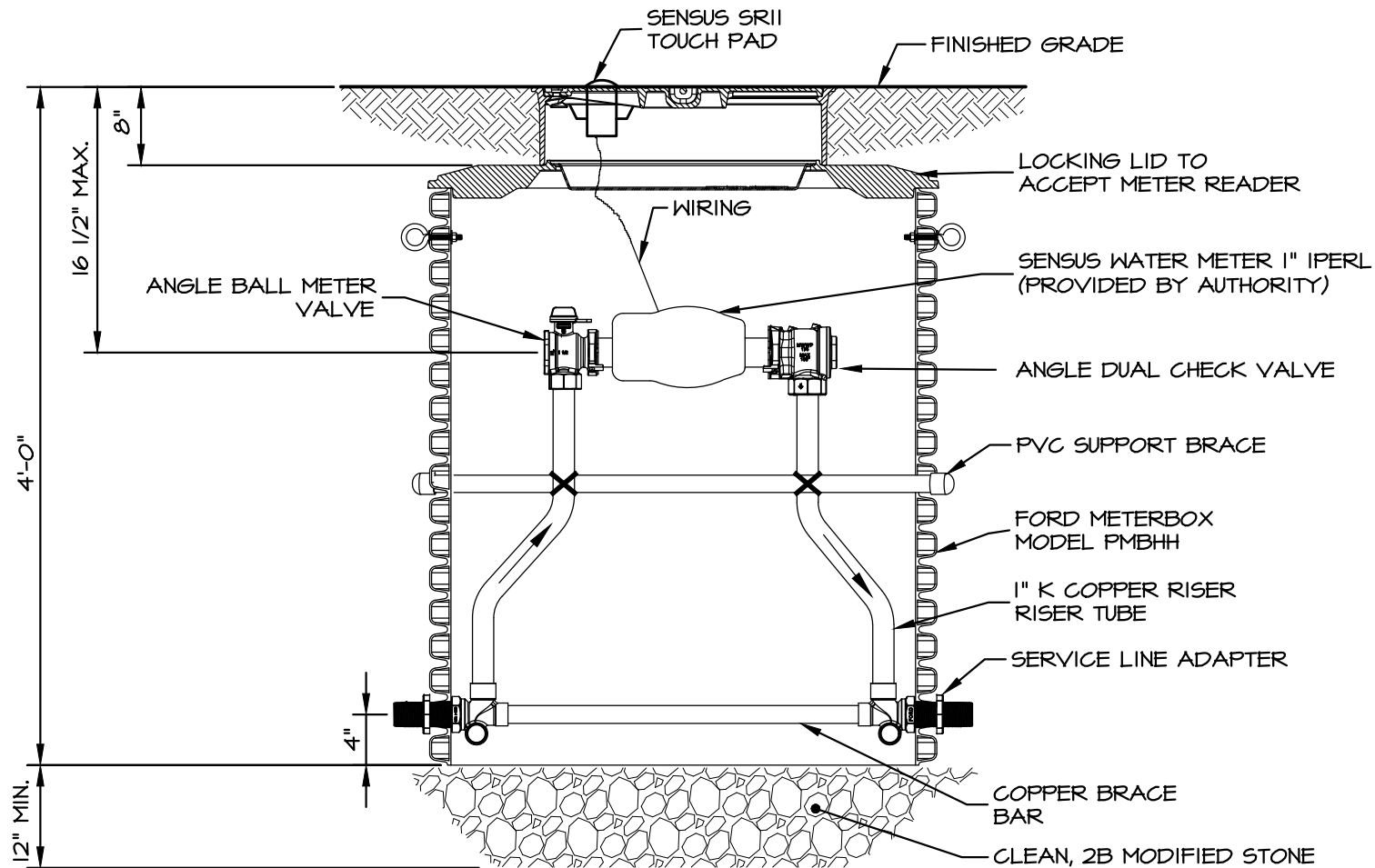


743 S. BROAD ST.
LITITZ, PA 17543
(717) 626-7271
elagroup.com

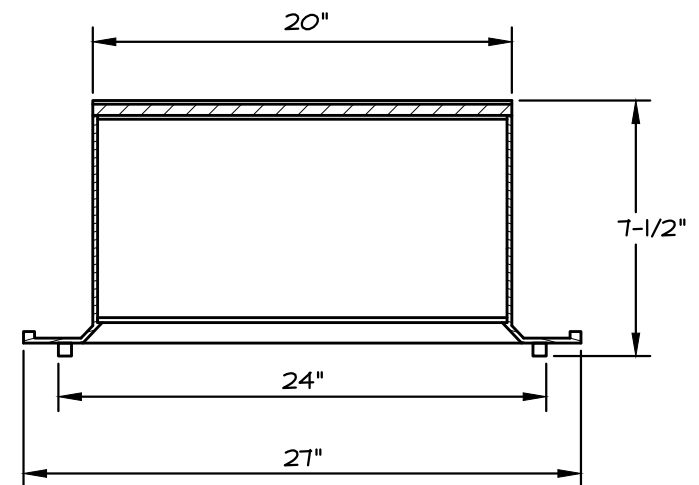
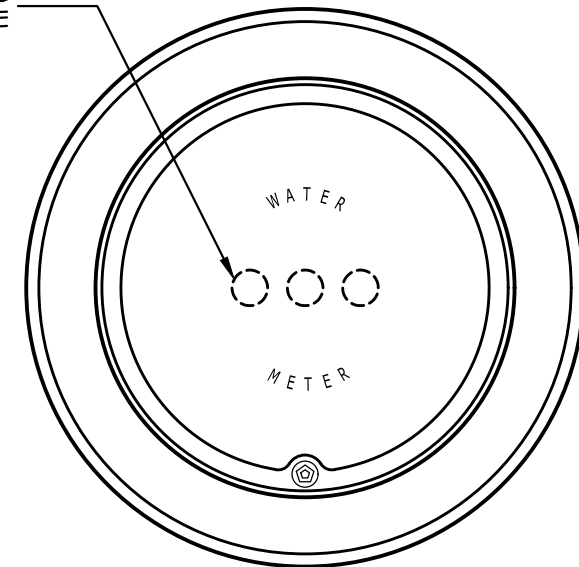
WATER METER PIT WITH FRAME AND LID-3/4" SERVICE STRASBURG BOROUGH AUTHORITY STANDARD DETAIL

SCALE:	NO SCALE	DRAWING: W-17
DRAWN BY:	TMO	
DATE:	JANUARY 2022	

DRAWING: C:\Users\lmoberholzer\ACCDocs\ELA_Group\452-021 Water Specs and Detail Updates\Project Files\CAD Data\Utility\DETAILS.dwg - PLOTTED: Mar 25, 2022 11:55 am



2" HOLES FOR ELECTRONIC
METER READING MODULE



GENERAL NOTES:

1. CONTACT THE STRASBURG BOROUGH AUTHORITY FOR INSPECTIONS: 717-687-7132.
2. ALL CONSTRUCTION OF THE WATER DISTRIBUTION SYSTEM SHALL CONFORM TO THE STRASBURG BOROUGH AUTHORITY WATER/SEWER SPECIFICATIONS, LATEST VERSION.
3. THE METER PIT SERVICE LINE BURY DEPTH SHALL BE AT A MINIMUM OF 4'-0".
4. BOTTOM OF METER PIT SHALL BE OPEN TO STONE BEDDING OR SHALL HAVE DRAINAGE HOLES AT BOTTOM OF METER PIT TO ALLOW FOR DRAINAGE OF METER PIT.

FRAME & LID NOTES:

1. FRAME AND LID SHALL BE CAST IRON AS PER ASTM A48-92, CLASS 25.
2. RECESSED INNER LID SHALL BE HIGH-IMPACT POLYSTYRENE PLASTIC.

WATER METER PIT WITH FRAME AND LID-1" SERVICE

NO SCALE

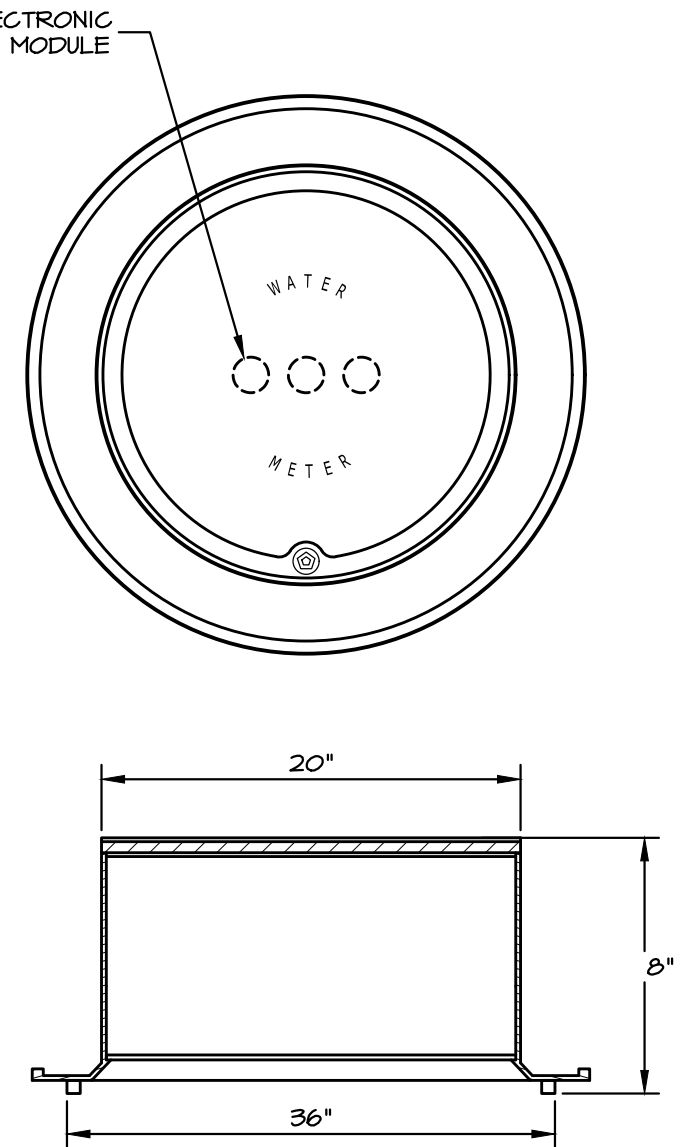
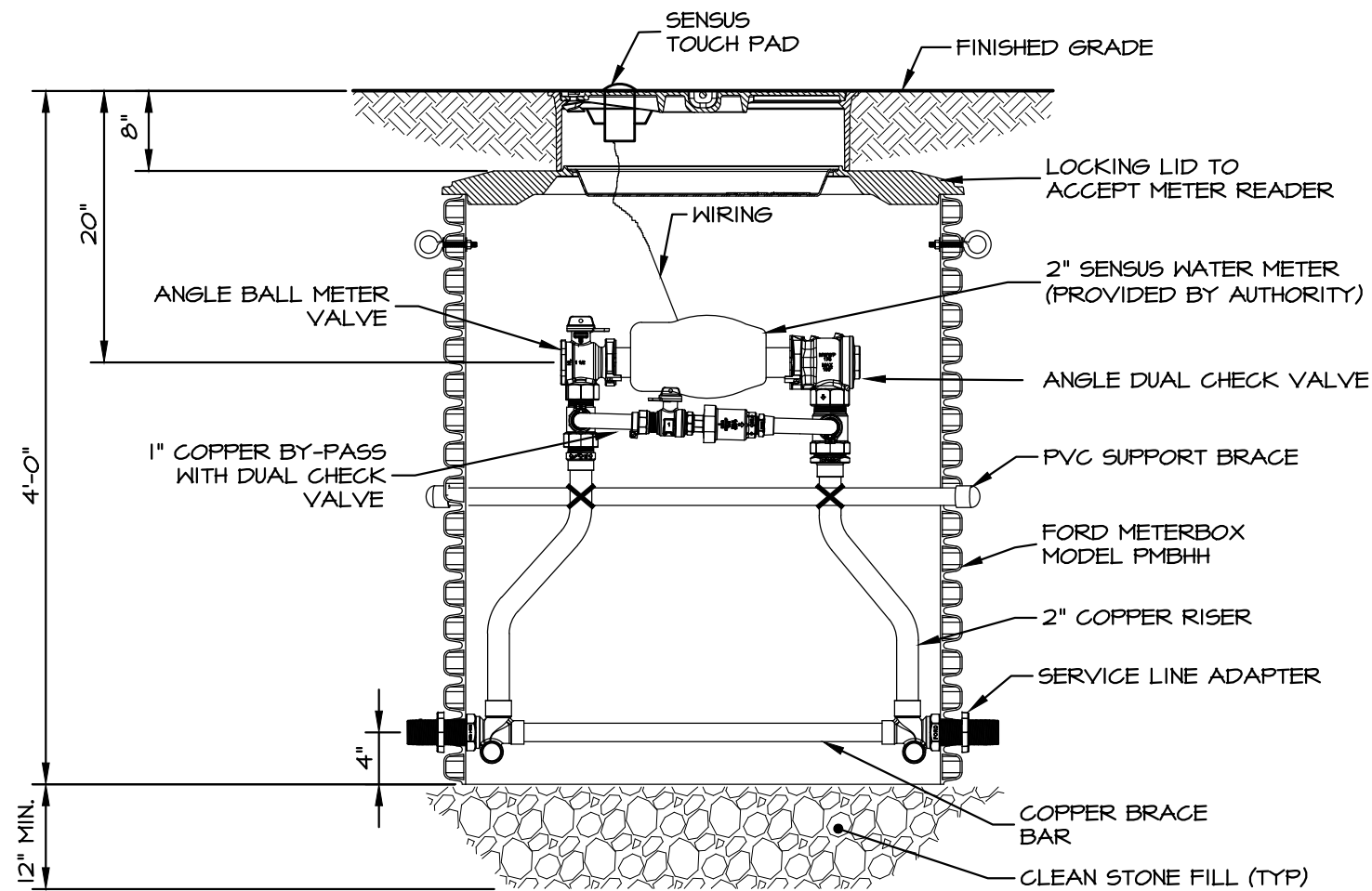


743 S. BROAD ST.
LITITZ, PA 17543
(717) 626-7271
elagroup.com

WATER METER PIT WITH FRAME AND LID-1" SERVICE STRASBURG BOROUGH AUTHORITY STANDARD DETAIL

SCALE:	NO SCALE	DRAWING: W-17A
DRAWN BY:	TMO	
DATE:	JANUARY 2022	

DRAWING: C:\Users\lmoberholzer\OneDrive\Documents\ELA Group\452-021 Water Specs and Detail Updates\Project Files\CAD Data\Utility\DETAILS.dwg - PLOTTED: Mar 25, 2022 11:55 am



GENERAL NOTES:

1. CONTACT THE STRASBURG BOROUGH AUTHORITY FOR INSPECTIONS: 717-687-T132.
2. ALL CONSTRUCTION OF THE WATER DISTRIBUTION SYSTEM SHALL CONFORM TO THE STRASBURG BOROUGH AUTHORITY WATER/SEWER SPECIFICATIONS, LATEST VERSION.
3. THE METER PIT SERVICE LINE BURY DEPTH SHALL BE AT A MINIMUM OF 4'-0".

FRAME & LID NOTES:

1. FRAME AND LID SHALL BE CAST IRON AS PER ASTM A48-92, CLASS 25.
2. RECESSED INNER LID SHALL BE HIGH-IMPACT POLYSTYRENE PLASTIC.

WATER METER PIT WITH FRAME AND LID-2" (FOR GRASS/NON-TRAFFIC AREAS)

NO SCALE



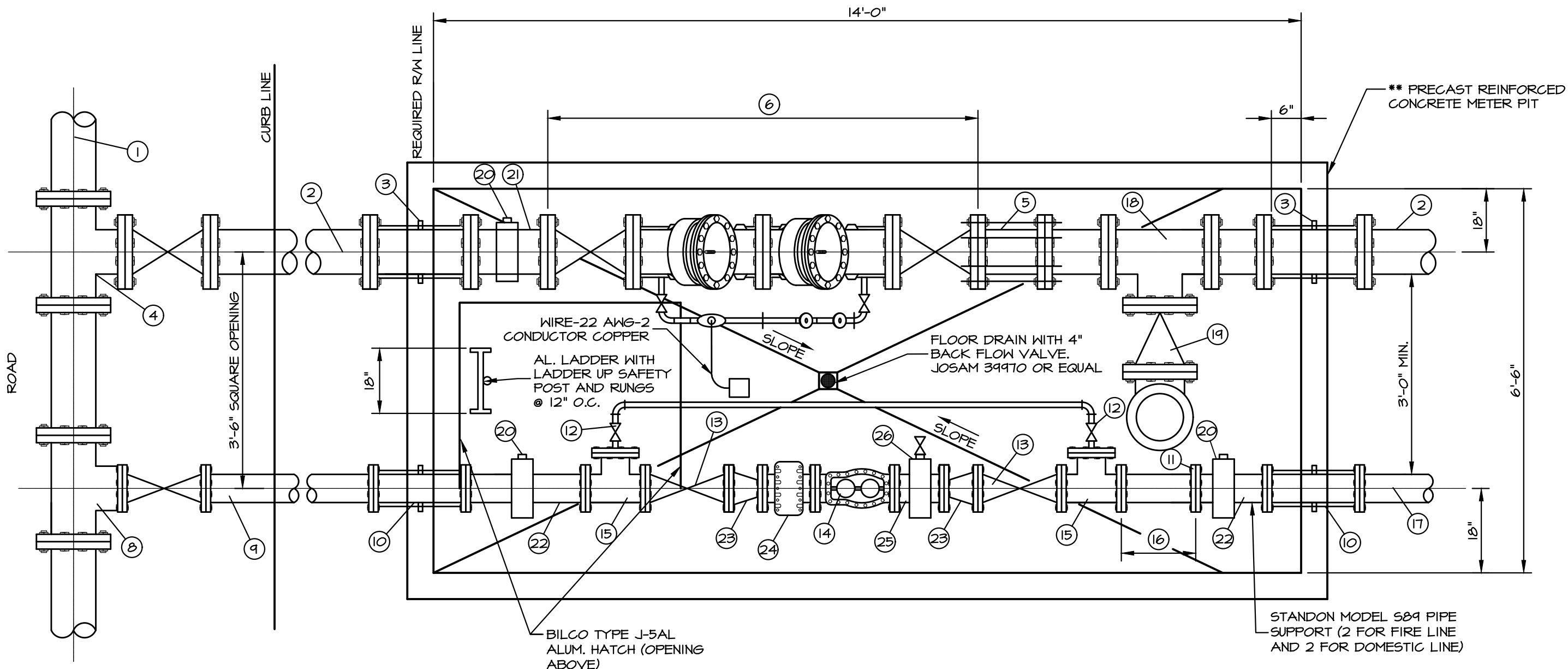
743 S. BROAD ST.
LITITZ, PA 17543
(717) 626-7271
elagroup.com

WATER METER PIT WITH FRAME AND LID-2" (FOR GRASS/NON-TRAFFIC AREAS)

STRASBURG BOROUGH AUTHORITY STANDARD DETAIL

SCALE:	NO SCALE	DRAWING: W-18
DRAWN BY:	TMO	
DATE:	JANUARY 2022	

DRAWING: C:\Users\imoberholzer\ACCDocs\ELA_Group\452-021 Meter Specs and Detail Updates\Project Files\CAD Data\Utility\DETAILS.dwg - PLOTTED: Mar 25, 2022 11:55 am



PLAN VIEW

METER PIT (4" DOMESTIC AND 6" FIRE)

NO SCALE

NOTE: SEE DETAIL W-19A FOR CHART



743 S. BROAD ST.
LITITZ, PA 17543
(717) 626-7271
elagroup.com

METER PIT (4" DOMESTIC AND 6" FIRE)
STRASBURG BOROUGH AUTHORITY STANDARD DETAIL

SCALE:	NO SCALE	DRAWING: W-19
DRAWN BY:	TMO	
DATE:	JANUARY 2022	

PIPING SCHEDULE		
ITEM	SIZE	DESCRIPTION
1	8"	EXISTING WATER MAIN
2	6"	FIRE LINE (CLASS 52 - C.L.D.I.)
3	6"	RODDED THRU WALL OR OMNI SLEEVE WITH MEG-A-LUG JOINT RESTRAINT (CL 53 OR CL 54)
4	6" X 6"	TAPPING SLEEVE W/ GATE VALVE
5	6" X 6"	FLANGE ADAPTER
6	6"	WATTS 709 DCDA DOUBLE CHECK DETECTOR ASSEMBLY OR EQUAL/BYPASS ROCKWELL ECR-TRPL TYPE WATER METER (5/8" X 3/4")
7	N/A	ROCKWELL (SENSUS) ECR-6 WHEEL, 10 DIGIT ID, GALLON WITH TRPL AND 25' TWO WIRE.
8	6" X 4"	TAPPING SLEEVE W/ GATE VALVE
9	4"	DOMESTIC LINE (CLASS 52 - C.L.D.I.)
10	4"	RODDED THRU WALL OR OMNI SLEEVE WITH MEG-A-LUG JOINT RESTRAINT (CL 53 OR CL 54)
11	4"	FLANGE
12	2"	LOCKING BALL VALVE - APOLLO 75-100-41 OR EQUAL
13	4"	GATE VALVE
14	3"	NEPTUNE HIGH PERFORMANCE COMPOUND METER (OR APPROVED EQUAL BY THE CITY OF LANCASTER)
15	4" X 2"	TEE
16	N/A	4" SPOOL PIECE (IN PLACE OF BACKFLOW PREVENTOR). RPZ BACKFLOW PREVENTOR TO BE LOCATED INSIDE BUILDING (SEE FLOOR PLAN DETAIL)
17	4"	DOMESTIC LINE (PVC SDR-21)
18	6" X 4"	TEE
19	4"	WAFER CHECK VALVE
20	2"	SERVICE SADDLE AND PLUG FOR FLUSHING
21	6"	SPOOL PIECE (CLASS 52 - C.L.D.I.)
22	4"	SPOOL PIECE (CLASS 52 - C.L.D.I.)
23	4" X 3"	REDUCER (BUSHING)
24	3"	STRAINER
25	3"	SPOOL PIECE
26	3"	SERVICE SADDLE WITH 2" BRASS NIPPLE AND VALVE

METER PIT (4" DOMESTIC AND 6" FIRE)

NO SCALE



743 S. BROAD ST.
LITITZ, PA 17543
(717) 626-7271
elagroup.com

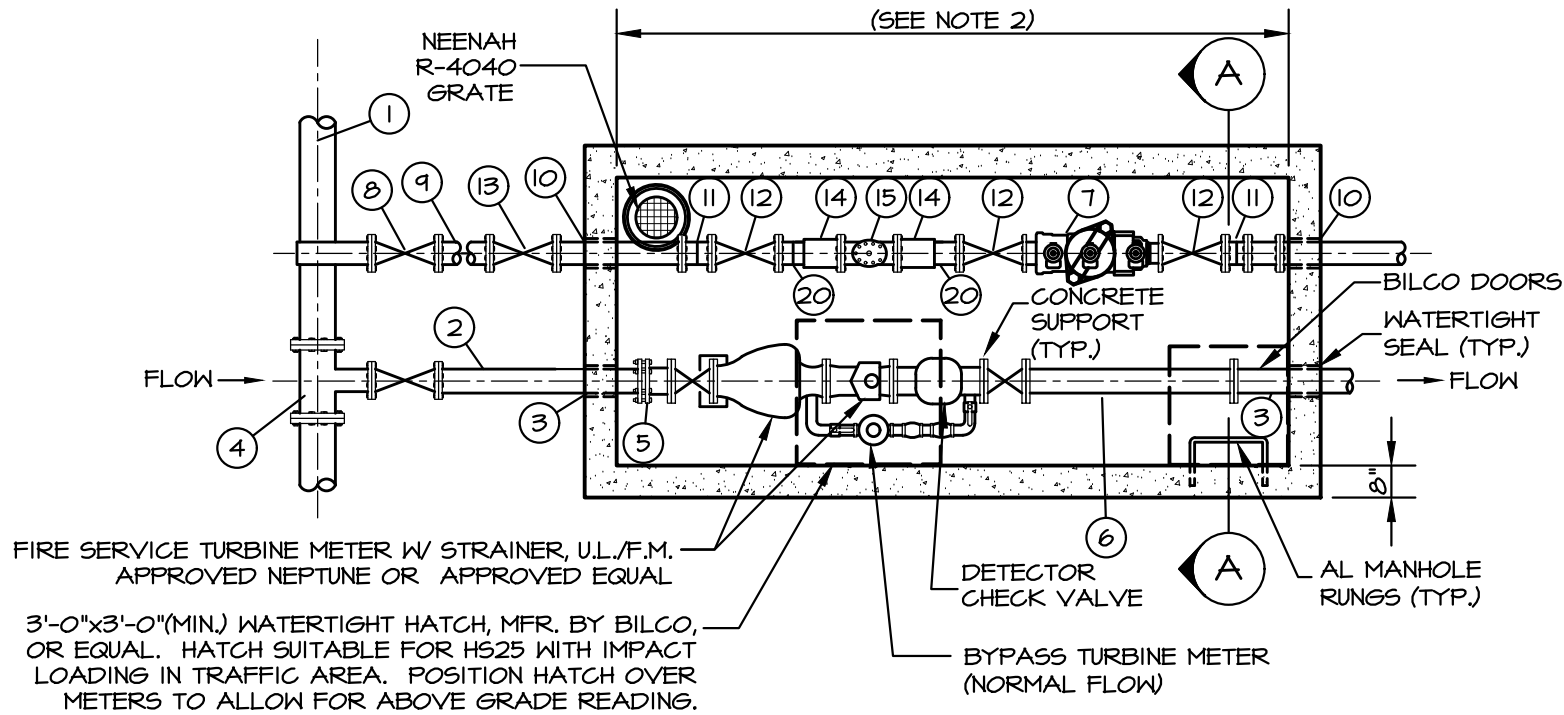
METER PIT (4" DOMESTIC AND 6" FIRE) STRASBURG BOROUGH AUTHORITY STANDARD DETAIL

SCALE:	NO SCALE
DRAWN BY:	TMO
DATE:	JANUARY 2022

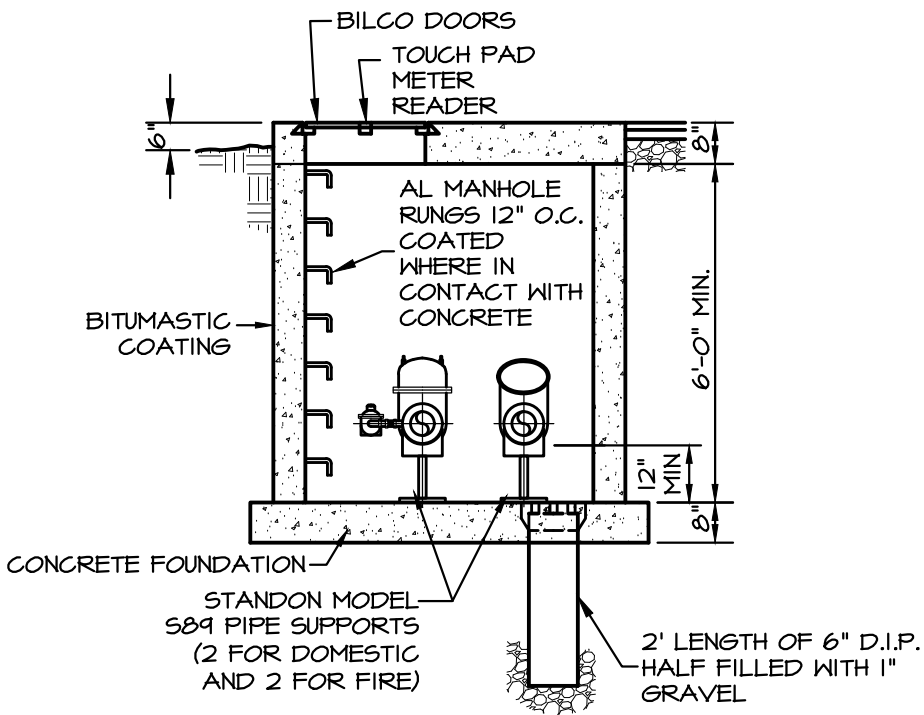
DRAWING:

W-19A

DRAWING: C:\Users\imoberholzer\ACCDocs\ELA_Group\452-021 Water Specs and Detail Updates\Project Files\CAD Data\Utility\DETAILS.dwg - PLOTTED: Mar 25, 2022 11:55 am



PLAN



SECTION A-A

PIPING SCHEDULE

ITEM	SIZE	DESCRIPTION
1	8"	PROPOSED WATER MAIN
2	6"	FIRE LINE (CLASS 52-C.L.D.I.)
3	6"	RODDED THRU WALL OR OMNI SLEEVE WITH MEG-A-LUG JOINT RESTRAINT (CL 53 OR CL 54)
4	6" X 8"	TEE
5	6" X 6"	FLANGE ADAPTER
6	N/A	SPOOL PIECE. NOTE: BACKFLOW PREVENTER LOCATED IN BUILDING. SEE MECHANICAL PLANS FOR DETAILS
7	2"	BACKFLOW PREVENTOR OR
8	2"	BRASS CORPORATION STOP
9	2"	DOMESTIC LINE (TYPE K COPPER TUBING)
10	2"	PVC SLEEVE (CAULKED IN PLACE)
11	2"	FLARED MALE PIPING ADAPTER
12	2"	GATE OR BALL VALVE
13	2"	CURB STOP WITH VALVE BOX
14	1.5"	METER COUPLING SCREWED INTO VALVE
15	1.5"	SENSUS METER TO BE PROVIDED BY THE STRASBURG BOROUGH AUTHORITY AND INSTALLED BY DEVELOPER
20	2" X 1.5"	REDUCER (BUSHING)

NOTES:

1. DETECTOR CHECK AND PIPING SHALL BE THE SAME NOMINAL SIZE.
2. THE MINIMUM DIMENSIONS OF THE METER PIT SHALL BE DETERMINED BY LENGTH OF INSTALLED METER AND TO SATISFY METER MFR.'S STRAIGHT PIPE REQUIREMENTS.
3. METER VAULT TO BE LOCATED OUTSIDE OF ROADWAYS OR TRAFFIC AREAS, UNLESS OTHERWISE APPROVED BY THE AUTHORITY.
4. ALL PIPING, VALVES, FITTINGS, ETC., TO BE FURNISHED AND INSTALLED BY CONSUMER, ASIDE FROM METER, WHICH SHALL BE PROVIDED BY THE AUTHORITY AND INSTALLED BY THE DEVELOPER.
5. PRESSURE REDUCING VALVE REQUIRED WHEN DISTRIBUTION SYSTEM OPERATING PRESSURES ARE GREATER THAN 80 PSI.
6. ALL NON-RESIDENTIAL INSTALLATIONS SHALL BE APPROVED INDIVIDUALLY BY THE AUTHORITY.
7. ALL JOINTS SEALED WATERTIGHT (TYP.).

METER PIT (2" DOMESTIC AND 8" FIRE)

NO SCALE

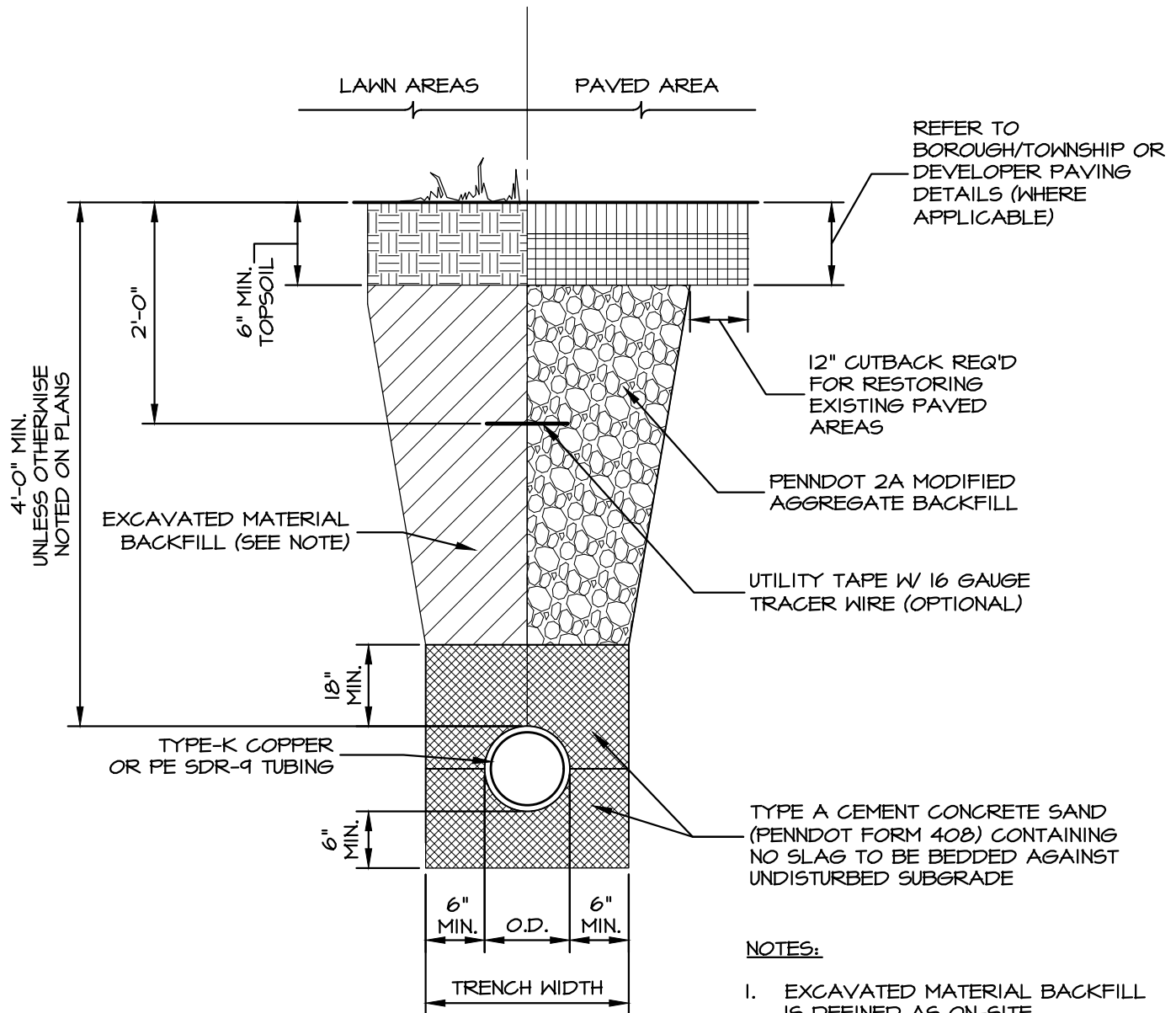
METER PIT (2" DOMESTIC AND 8" FIRE)
STRASBURG BOROUGH AUTHORITY STANDARD DETAIL



743 S. BROAD ST.
LITITZ, PA 17543
(717) 626-7271
elagroup.com

SCALE:	NO SCALE
DRAWN BY:	TMO
DATE:	JANUARY 2022

DRAWING:
W-20



SMALL DIAMETER WATER LINE TRENCH

NO SCALE



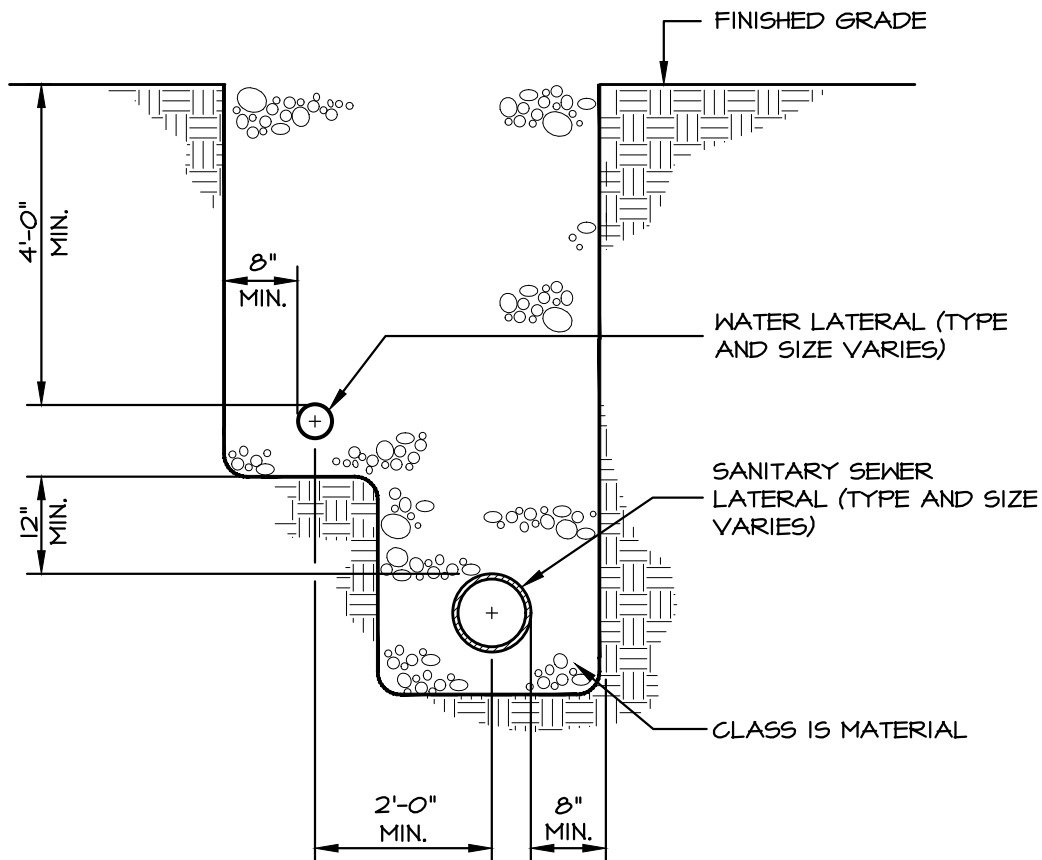
743 S. BROAD ST.
LITITZ, PA 17543
(717) 626-7271
elagroup.com

SMALL DIAMETER WATER LINE TRENCH STRASBURG BOROUGH AUTHORITY STANDARD DETAIL

SCALE:	NO SCALE
DRAWN BY:	TMO
DATE:	JANUARY 2022

DRAWING:

W-21



NOTE:

- I. FOR FINAL RESTORATION, SEE APPROPRIATE DETAIL

COMBINATION SERVICE LATERAL TRENCH

NO SCALE



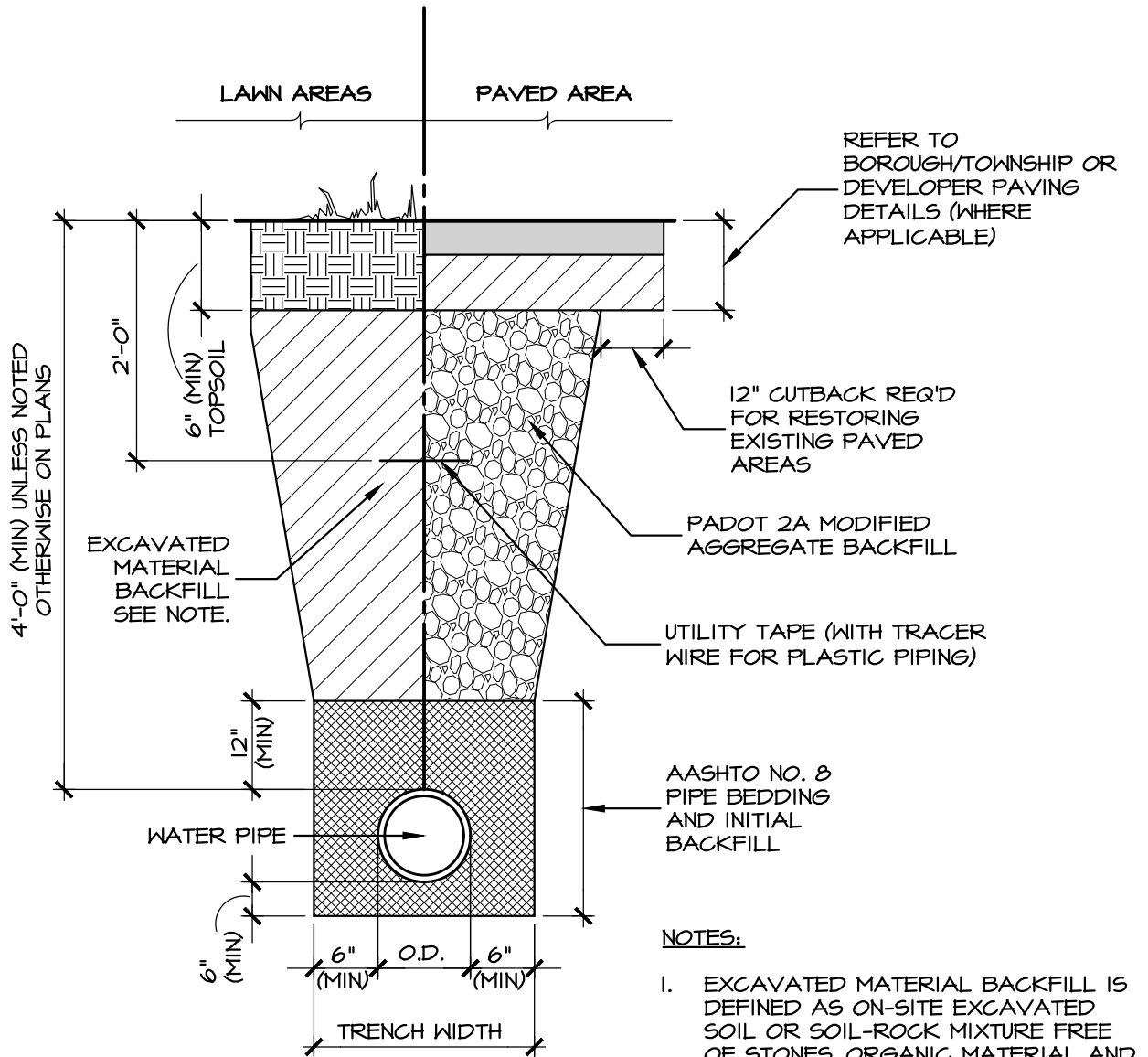
743 S. BROAD ST.
LITITZ, PA 17543
(717) 626-7271
elagroup.com

COMBINATION SERVICE LATERAL TRENCH STRASBURG BOROUGH AUTHORITY STANDARD DETAIL

SCALE:	NO SCALE
DRAWN BY:	TMO
DATE:	JANUARY 2022

DRAWING:

W-22



LARGE DIAMETER WATER PIPE INSTALLATION

NO SCALE



LARGE DIAMETER WATER PIPE INSTALLATION STRASBURG BOROUGH AUTHORITY STANDARD DETAIL

743 S. BROAD ST.
LITITZ, PA 17543
(717) 626-7271
elagroup.com

SCALE:	NO SCALE
DRAWN BY:	TMO
DATE:	JANUARY 2022

DRAWING:

W-23